

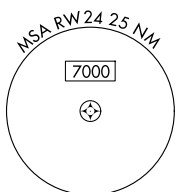
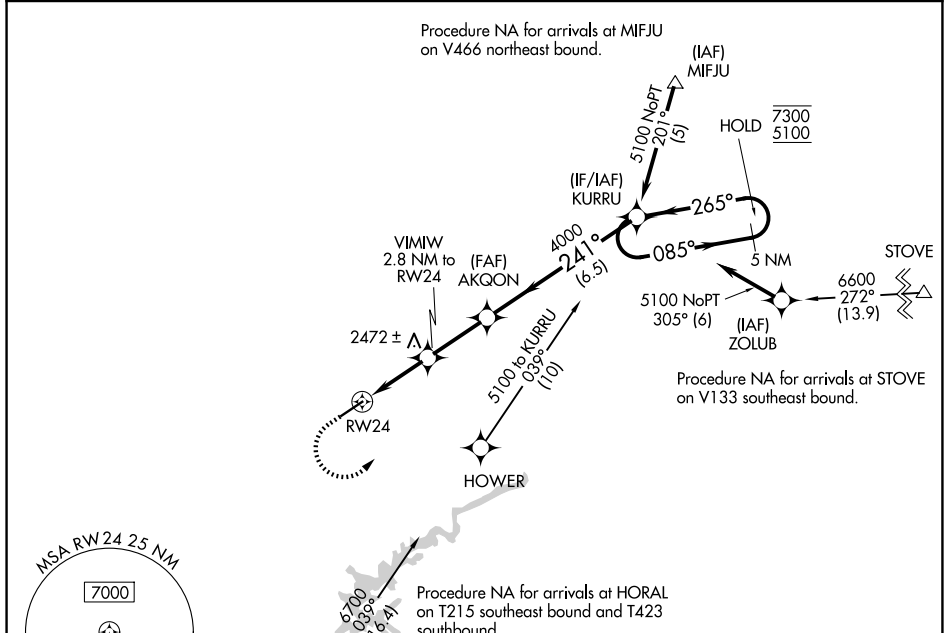
WAAS CH <b>77827</b> <b>W24A</b>	APP CRS <b>241°</b>	Rwy Ldg TDZE Apt Elev	<b>5500</b> <b>2087</b> <b>2087</b>
--	------------------------	-----------------------------	---

# RNAV (GPS) RWY 24

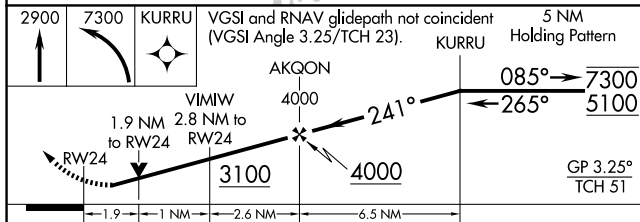
VIRGINIA HIGHLANDS (VJI)

RNP APCH - GPS	ODALS	MISSED APPROACH: Climb to 2900 then climbing left turn to 7300 direct KURRU and hold, continue climb-in-hold.
<p>▼ For uncompensated Baro-VNAV systems, LNAV/VNAV NA below -19°C or above 54°C. Rwy 24 helicopter visibility reduction below ¾ SM NA. Inop table does not apply to LPV. For inop ALS, increase LNAV/VNAV Cat A/B visibility to 1¼ SM.</p>		

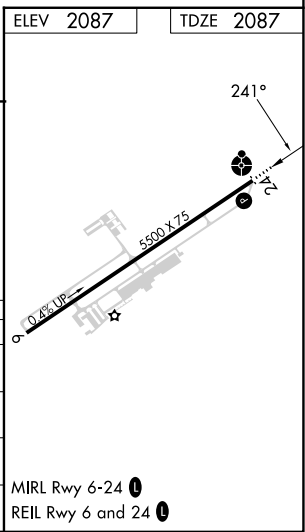
AWOS-3 <b>128.125</b>	TRI CITY APP CON * <b>125.25 349.0</b>	UNICOM <b>122.8 (CTAF) 0</b>
--------------------------	---	---------------------------------



ELEV 2087	TDZE 2087
-----------	-----------



CATEGORY	A	B	C	D
LPV DA		2451-1	364 (400-1)	
LNAV/VNAV DA		2682-1½	595 (600-1½)	
LNAV MDA	2760-¾	673 (700-¾)	2760-1¾	673 (700-1¾)
CIRCLING	2860-1	773 (800-1)	2860-2¼	3080-3
			773 (800-2¼)	993 (1000-3)



MIRL Rwy 6-24 0  
REIL Rwy 6 and 24 0

NE-3, 16 APR 2026 to 14 MAY 2026

NE-3, 16 APR 2026 to 14 MAY 2026