

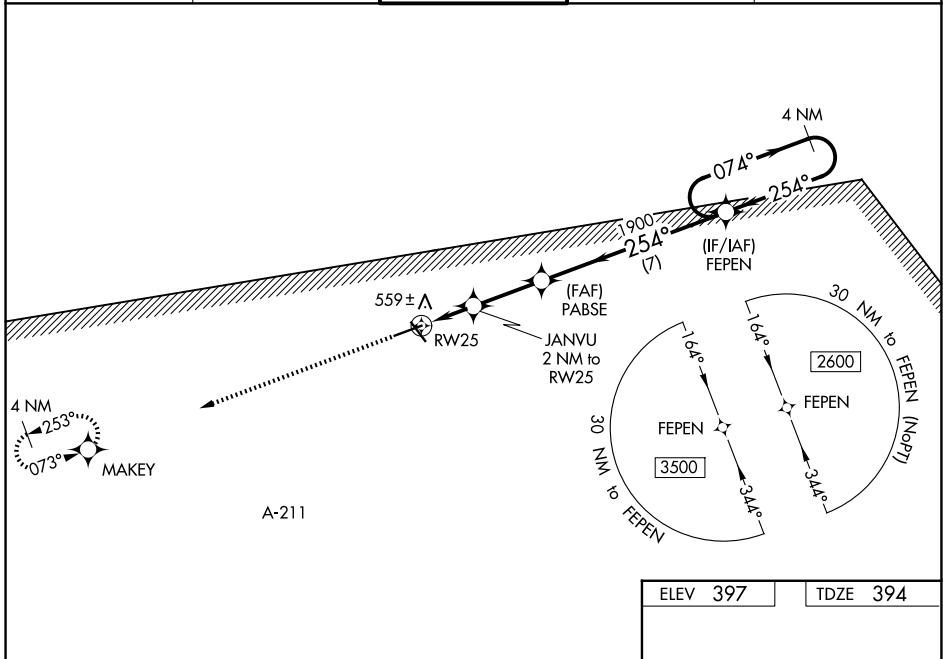
WAAS CH 50137 W25A	APP CRS 254°	Rwy Ldg TDZE Apt Elev	6197 394 397
--	------------------------	-----------------------------	---

RNAV (GPS) RWY 25

TROY MUNI AT N KENNETH CAMPBELL FLD (TOI)

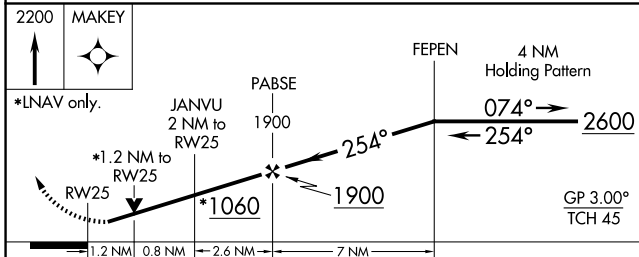
RNP APCH.	<p>▼ For uncompensated Baro-VNAV systems, LNAV/VNAV NA below -7°C (20°F) or above 54°C (130°F). Baro-VNAV and VDP NA when using Montgomery Rgnl (Dannelly Fld) altimeter setting. Rwy 25 helicopter visibility reduction below 3/4 SM NA. Circling to Rwy 14, 32 NA at night. When local altimeter setting not received, use Montgomery Rgnl (Dannelly Fld) altimeter setting and increase LPV DA to 747 and all visibilities 1/4 SM, LNAV/VNAV DA to 840 and visibilities 3/8 SM, and all MDA 100 feet; increase LNAV Cats C and D and Circling Cat C visibility 1/4 SM.</p>	MISSED APPROACH: Climb to 2200 direct MAKEY and hold.
-----------	---	---

ATIS 120.925	CAIRNS APP CON ★ 121.1 319.25	TROY TOWER ★ 124.3 (CTAF) 306.9	GND CON 121.9 294.7	UNICOM 122.8
------------------------	---	---	-------------------------------	------------------------



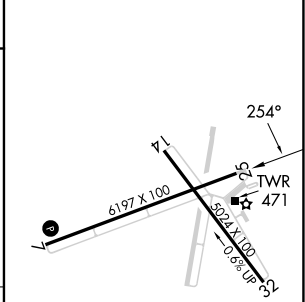
SE-4, 16 APR 2026 to 14 MAY 2026

SE-4, 16 APR 2026 to 14 MAY 2026



ELEV 397	TDZE 394
----------	----------

2200	MAKEY			
*LNAV only.				
JANVU 2 NM to RW25	PABSE 1900			
*1.2 NM to RW25	*1060			
1.2 NM	0.8 NM			
2.6 NM	7 NM			
4 NM	4 NM			
254°	074°			
254°	2600			
1900	GP 3.00°			
	TCH 45			
CATEGORY	A	B	C	D
LPV DA	647-7/8 253 (300-7/8)			
LNAV/VNAV DA	740-1 3/8 346 (400-1 1/8)			
LNAV MDA	820-1	426 (500-1)	820-1 1/4	426 (500-1 1/4)
CIRCLING	1000-1	603 (700-1)	1300-2 3/4	1380-3
			903 (1000-2 3/4)	983 (1000-3)



RNAV (GPS) RWY 25