

WAAS CH 70441 W11A	APP CRS 115°	Rwy Ldg 4099 TDZE 790 Apt Elev 790
--	------------------------	---

RNAV (GPS) RWY 11

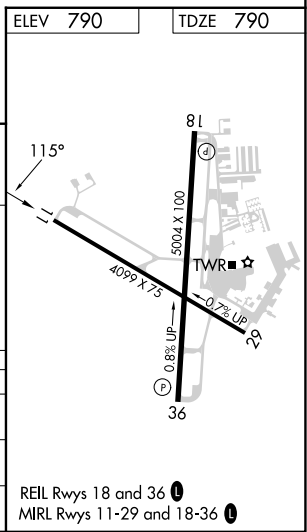
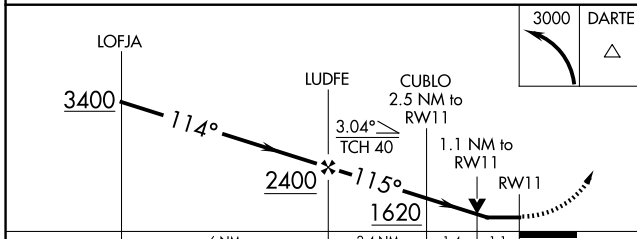
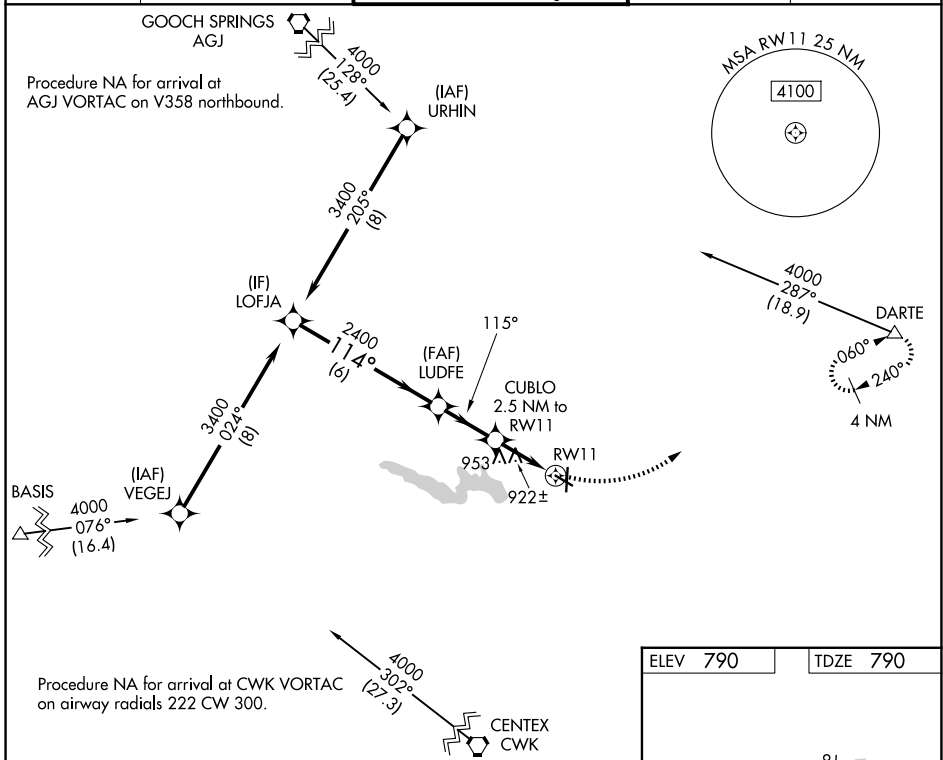
GEORGETOWN EXEC (GTU)

RNP APCH

▼ Rwy 11 helicopter visibility reduction below $\frac{3}{4}$ SM NA. When local altimeter setting not received, use Skylark Field altimeter setting and increase all MDA 80 feet. Increase LP and Circling Cat C/D visibility $\frac{1}{2}$ SM and LNAV Cat C/D visibility $\frac{1}{8}$ SM. VDP NA when using Skylark Field altimeter setting.

MISSED APPROACH:
Climbing left turn to 3000 direct DARTE and hold.

ATIS 118.6	AUSTIN APP CON 119.0 370.85	GEORGETOWN TOWER ★ 120.225 (CTAF) 0	GND CON 119.125	UNICOM 123.0
----------------------	---------------------------------------	---	---------------------------	------------------------



CATEGORY	A	B	C	D
LP MDA	1180-1	390 (400-1)	1180-1 $\frac{1}{8}$	390 (400-1 $\frac{1}{8}$)
LNAV MDA	1220-1	430 (500-1)	1220-1 $\frac{1}{4}$	430 (500-1 $\frac{1}{4}$)
CIRCLING	1240-1 450 (500-1)	1340-1 550 (600-1)	1360-1 $\frac{1}{2}$ 570 (600-1 $\frac{1}{2}$)	1640-2 $\frac{3}{4}$ 850 (900-2 $\frac{3}{4}$)

SC-3, 16 APR 2026 to 14 MAY 2026

SC-3, 16 APR 2026 to 14 MAY 2026