

APP CRS	Rwy Ldg	<b>4099</b>
<b>295°</b>	TDZE	<b>777</b>
	Apt Elev	<b>790</b>

# RNAV (GPS) RWY 29

GEORGETOWN EXEC (GTU)

RNP APCH.

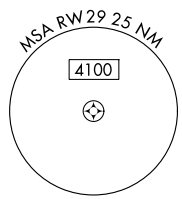
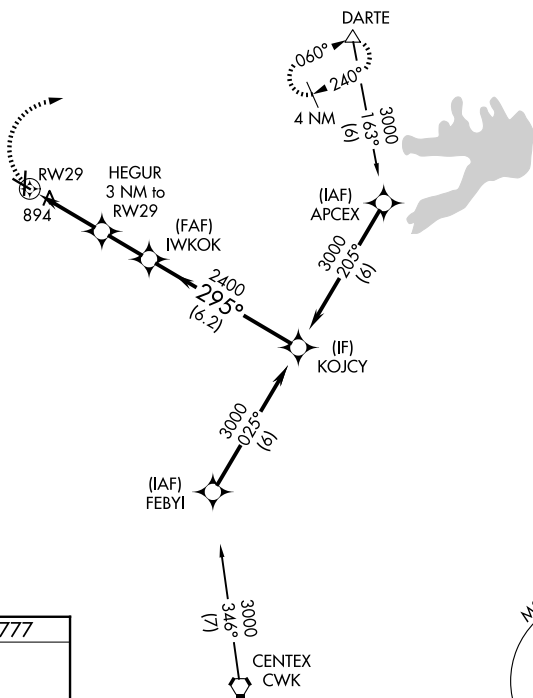
**▼** Rwy 29 helicopter visibility reduction below 3/4 SM NA. VDP NA when using Skylark Field altimeter setting. When local altimeter setting not received, use Skylark Field altimeter setting and increase all MDA 80 feet increase LNAV and Circling Cat C/D visibility 1/4 SM.

**MISSED APPROACH:** Climbing right turn to 3000 direct DARTE and hold.

ATIS <b>118.6</b>	AUSTIN APP CON <b>119.0 370.85</b>	GEORGETOWN TOWER ★ <b>120.225 (CTAF) 0</b>	GND CON <b>119.125</b>	UNICOM <b>123.0</b>
----------------------	---------------------------------------	---	---------------------------	------------------------

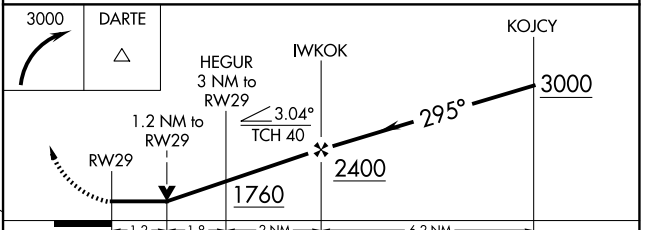
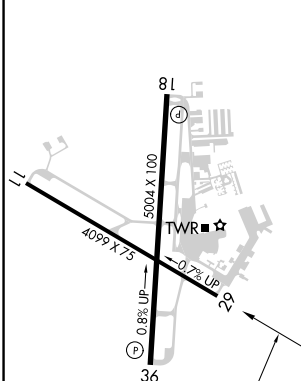
SC-3, 16 APR 2026 to 14 MAY 2026

SC-3, 16 APR 2026 to 14 MAY 2026



Procedure NA for arrival on CWK VORTAC airway radials 271 CW 070.

ELEV 790	TDZE 777
----------	----------



CATEGORY	A	B	C	D
LNAV MDA	1220-1	443 (500-1)	1220-1 3/8	443 (500-1 3/8)
CIRCLING	1240-1 450 (500-1)	1340-1 550 (600-1)	1360-1 1/2 570 (600-1 1/2)	1640-2 3/4 850 (900-2 3/4)

REIL Rwy 18 and 36  
MIRL Rwy 11-29 and 18-36