

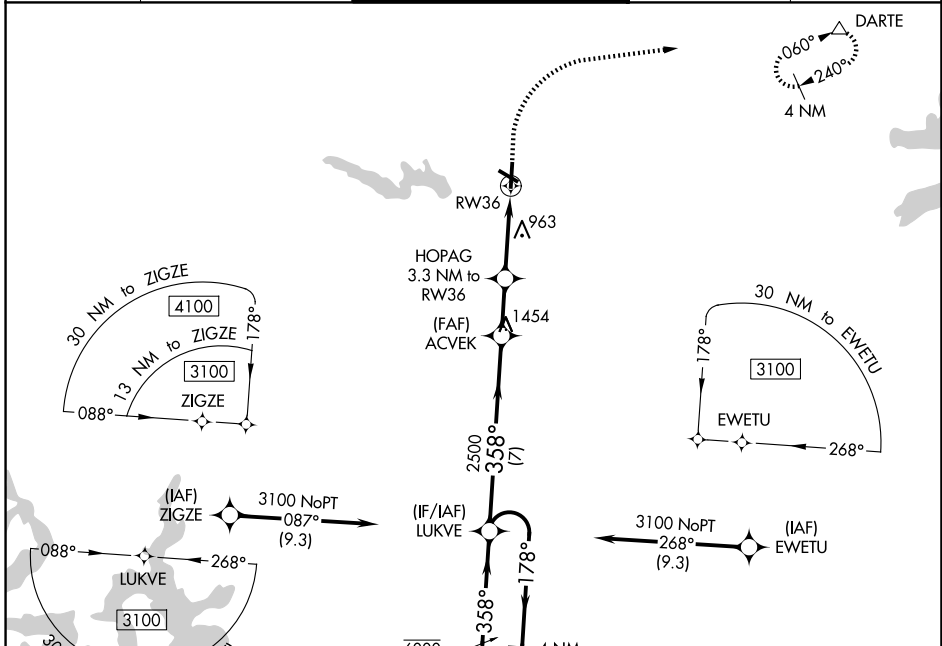
WAAS CH 72738 W36A	APP CRS 358°	Rwy Ldg TDZE Apt Elev	5004 765 790
--	------------------------	-----------------------------	---

RNAV (GPS) RWY 36

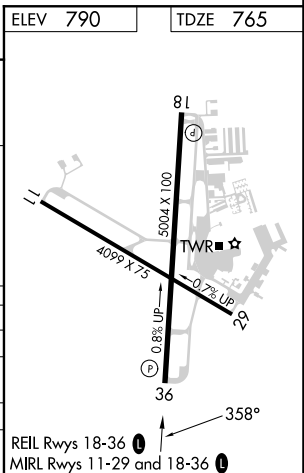
GEORGETOWN EXEC (GTU)

RNP APCH.		<p>▼ Circling Rwy 29 NA at night. Rwy 36 helicopter visibility reduction below 3/4 SM NA. ▲ For uncompensated Baro-VNAV systems, LNAV/VNAV NA below -16°C or above 54°C.</p>		
MISSED APPROACH: Climb to 1300 then climbing right turn to 3000 direct DARTE and hold.				

ATIS 118.6	AUSTIN APP CON 119.0 370.85	GEORGETOWN TOWER ★ 120.225 (CTAF) 0	GND CON 119.125	UNICOM 123.0
----------------------	---------------------------------------	---	---------------------------	------------------------



4 NM Holding Pattern		1300	3000	DARTE
LUKVE		↑	↘	△
6000	← 178°	*LNAV only.		
3100	→ 358°	ACVEK 2500		
GP 3.00° TCH 50		HOPAG 3.3 NM to RW36		
2500		*1840		
← 7 NM		*1.3 NM to RW36		
A		B		
C		D		
CATEGORY	A	B	C	D
LPV DA	1015-1		250 (300-1)	
LNAV/VNAV DA	1242-1 3/8		477 (500-1 1/8)	
LNAV MDA	1220-1	455 (500-1)	1220-1 3/8	455 (500-1 1/8)
CIRCLING	1240-1	1340-1	1360-1 1/2	1640-2 3/4
	450 (500-1)	550 (600-1)	570 (600-1 1/2)	850 (900-2 3/4)



SC-3, 16 APR 2026 to 14 MAY 2026

SC-3, 16 APR 2026 to 14 MAY 2026