

(BEAVY6.BEAVY) 24081

AL-5726 (FAA)

CHARLOTTE/MONROE EXEC (EQY)  
MONROE, NORTH CAROLINA

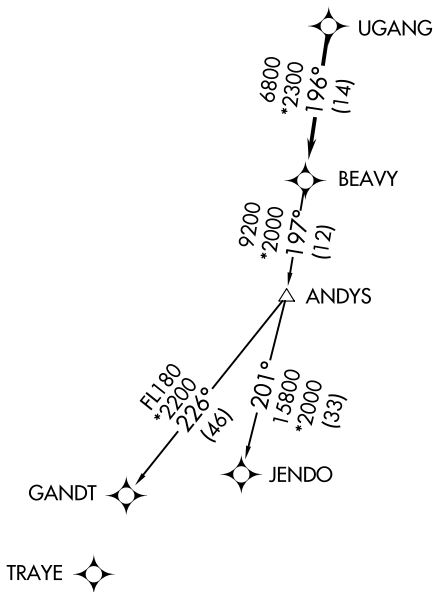
# BEAVY SIX DEPARTURE (RNAV)

CHARLOTTE DEP CON  
120.05 307.8  
ASOS  
135.775  
CLNC DEL  
132.55  
UNICOM (CTAF)  
122.7

RNAV 1-DME/DME/IRU or GPS.

RADAR required.

**TOP ALTITUDE:  
3000**



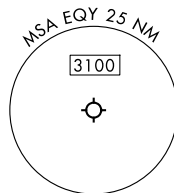
### TAKEOFF MINIMUMS

Rwys 5, 23: Standard.

SE-2, 16 APR 2026 to 14 MAY 2026

SE-2, 16 APR 2026 to 14 MAY 2026

- NOTE: For turbo jets only.
- NOTE: If unable to accept climb rates, advise ATC on initial contact.
- NOTE: Transponder code will be issued via PDC or Charlotte CLNC DEL.
- NOTE: Upon reaching 10000 MSL, accelerate to and maintain 280K, if unable advise ATC.



NOTE: Chart not to scale.

## DEPARTURE ROUTE DESCRIPTION

Climb on heading assigned by ATC, on RADAR vectors to UGANG, then on depicted route to BEAVY. Then on assigned transition maintain 3000, expect clearance to filed altitude within 10 minutes after departure.

GANDT TRANSITION (BEAVY6.GANDT)

JENDO TRANSITION (BEAVY6.JENDO)

# BEAVY SIX DEPARTURE (RNAV)

(BEAVY6.BEAVY) 21MAR24

MONROE, NORTH CAROLINA  
CHARLOTTE/MONROE EXEC (EQY)