

**(KER4.KER) 24081**  
**KERMIT FOUR DEPARTURE**

AL-5726 (FAA)

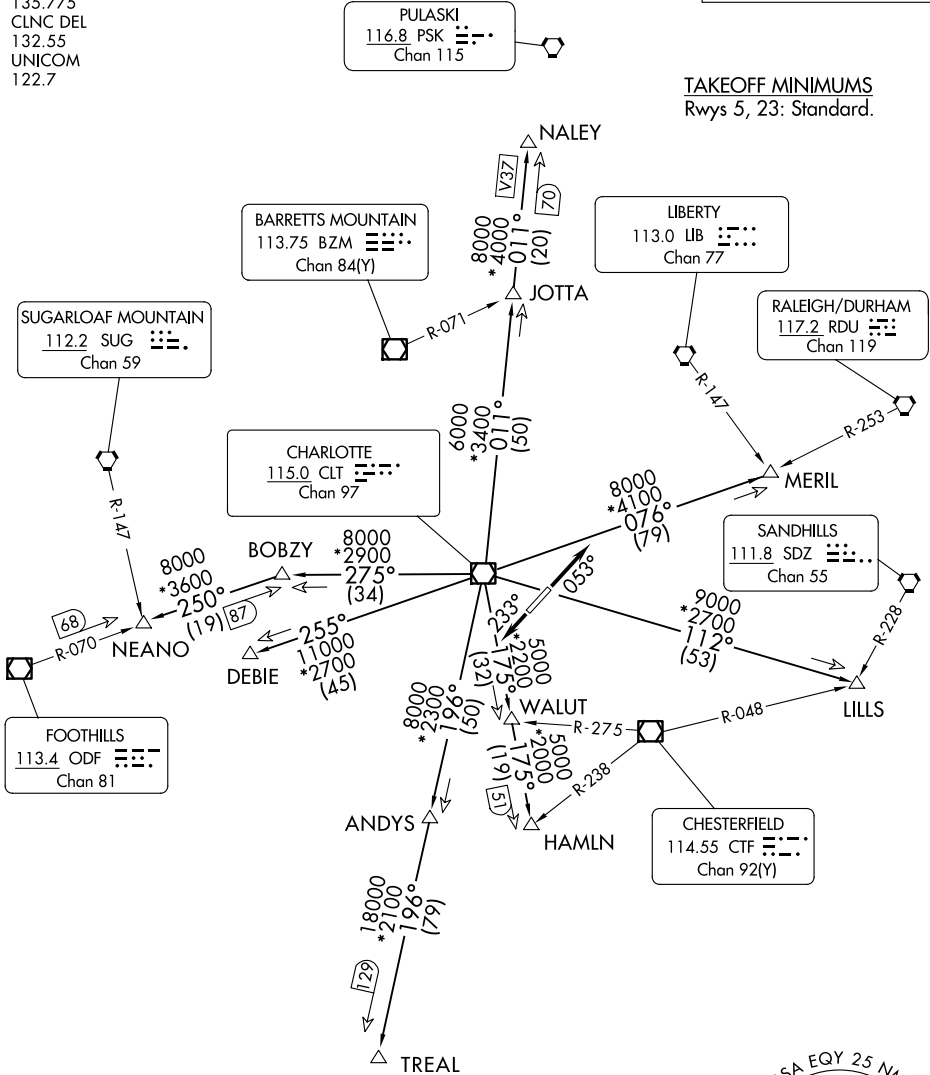
**CHARLOTTE/MONROE EXEC (EQY)**  
 MONROE, NORTH CAROLINA

CHARLOTTE DEP CON  
 120.05 307.8  
 ASOS  
 135.775  
 CLNC DEL  
 132.55  
 UNICOM  
 122.7

**RADAR and DME required.**

**TOP ALTITUDE:  
 3000**

**TAKEOFF MINIMUMS**  
 Rwy 5, 23: Standard.



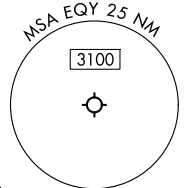
SE-2, 16 APR 2026 to 14 MAY 2026

SE-2, 16 APR 2026 to 14 MAY 2026

NOTE: For turbo jet aircraft only.  
 NOTE: Upon reaching 10000 MSL, accelerate to and maintain 280K, if unable advise ATC.  
 NOTE: Transponder code will be issued via Charlotte clearance delivery.

NOTE: Chart not to scale.

(CONTINUED ON FOLLOWING PAGE)



**KERMIT FOUR DEPARTURE**  
**(KER4.KER) 21MAR24**

**MONROE, NORTH CAROLINA**  
**CHARLOTTE/MONROE EXEC (EQY)**



DEPARTURE ROUTE DESCRIPTION

TAKEOFF RUNWAY 5: Climb on heading 053°, thence . . . .

TAKEOFF RUNWAY 23: Climb on heading 233°, thence . . . .

. . . . on RADAR vectors to intercept filed/assigned transition or enroute fix/navaid.  
Maintain 3000, expect filed altitude/flight level 10 minutes after departure.

ANDYS TRANSITION (KER4.ANDYS): From over CLT VOR/DME on CLT R-196 to ANDYS.

DEBIE TRANSITION (KER4.DEBIE): From over CLT VOR/DME on CLT R-255 to DEBIE.

HAMLN TRANSITION (KER4.HAMLN): From over CLT VOR/DME on CLT R-175 to HAMLN.

JOTTA TRANSITION (KER4.JOTTA): From over CLT VOR/DME on CLT R-011 to JOTTA.

LILLS TRANSITION (KER4.LILLS): From over CLT VOR/DME on CLT R-112 to LILLS.

MERIL TRANSITION (KER4.MERIL): From over CLT VOR/DME on CLT R-076 to MERIL.

NALEY TRANSITION (KER4.NALEY): From over CLT VOR/DME on CLT R-011 to NALEY.

NEANO TRANSITION (KER4.NEANO): From over CLT VOR/DME on CLT R-275 to BOBZY,  
then on ODF R-070 to NEANO.

TREAL TRANSITION (KER4.TREAL): From over CLT VOR/DME on CLT R-196 to TREAL.

SE-2, 16 APR 2026 to 14 MAY 2026

SE-2, 16 APR 2026 to 14 MAY 2026