

# KILNS FIVE DEPARTURE (RNAV)

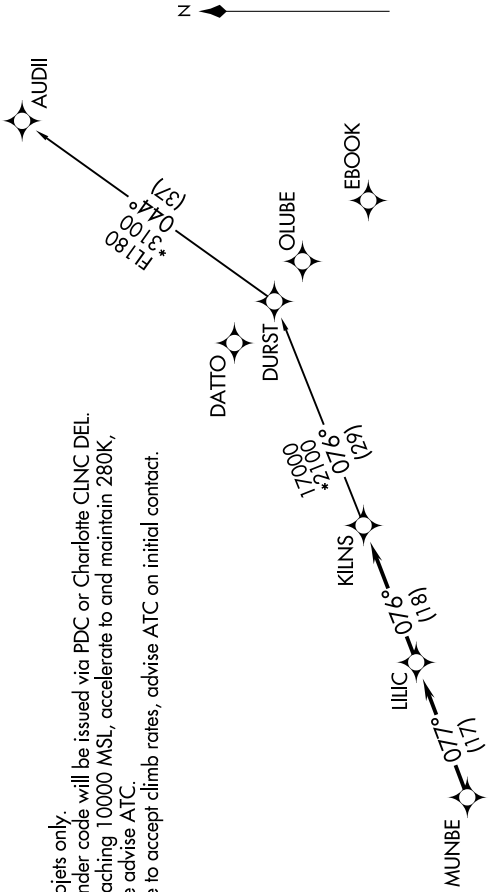
SE-2, 16 APR 2026 to 14 MAY 2026

CHARLOTTE DEP CON  
120.05 307.8  
ASOS  
135.775  
CLNC DEL  
132.55  
UNICOM (CTAF)  
122.7

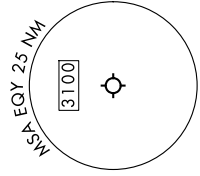
RNAV 1 - DME/DME/IRU or GPS.  
RADAR required.

- NOTE: For turboprops only.
- NOTE: Transponder code will be issued via PDC or Charlotte CLNC DEL.
- NOTE: Upon reaching 10000 MSL, accelerate to and maintain 280K, if unable advise ATC.
- NOTE: If unable to accept climb rates, advise ATC on initial contact.

**TOP ALTITUDE:**  
3000



**TAKEOFF MINIMUMS**  
Rwys 5, 23: Standard.



NOTE: Chart not to scale.

## DEPARTURE ROUTE DESCRIPTION

Climb on heading assigned by ATC, on RADAR vectors to MUNBE, then on depicted route to KILNS, then on AUDII Transition. Maintain 3000. Expect clearance to filed altitude within 10 minutes after departure.

**AUDII TRANSITION (KILNS5:AUDII)**

# KILNS FIVE DEPARTURE (RNAV)

(KILNS5.KILNS) 21MAR24

SE-2, 16 APR 2026 to 14 MAY 2026