

# KRITR SIX DEPARTURE (RNAV)

AL-5726 (FAA)

CHARLOTTE/MONROE EXEC (EQY)  
MONROE, NORTH CAROLINA

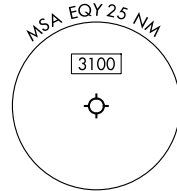
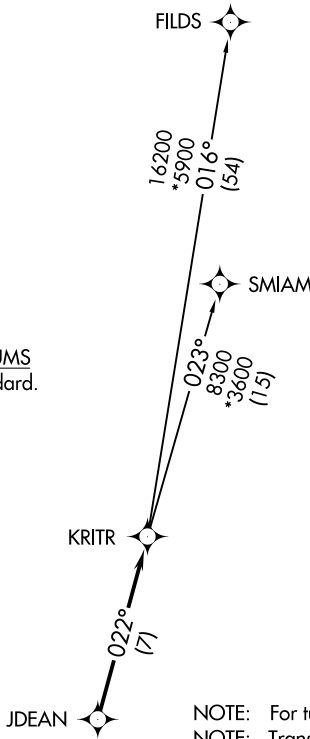
CHARLOTTE DEP CON  
120.05 307.8  
ASOS  
135.775  
CLNC DEL  
132.55  
UNICOM (CTAF)  
122.7

**TOP ALTITUDE:  
3000**

RNAV 1 - DME/DME/IRU or GPS.

RADAR required.

TAKEOFF MINIMUMS  
Rwys 5, 23: Standard.



- NOTE: For turbo jets only.
- NOTE: Transponder code will be issued via PDC or Charlotte CLNC DEL.
- NOTE: If unable to accept climb rates, advise ATC on initial contact.
- NOTE: Upon reaching 10000 MSL, accelerate to and maintain 280K, if unable advise ATC.

NOTE: Chart not to scale.



## DEPARTURE ROUTE DESCRIPTION

Climb on heading assigned by ATC, on RADAR vectors to JDEAN, then on track 022° to KRITR, then on assigned transition. Maintain 3000, expect filed altitude within 10 minutes after departure.

- FILDS TRANSITION (KRITR6.FILDS)
- SMIAM TRANSITION (KRITR6.SMIAM)

# KRITR SIX DEPARTURE (RNAV)