

(KWEEN5.KWEEN) 24081

AL-5726 (FAA)

CHARLOTTE/MONROE EXEC (EQY)  
MONROE, NORTH CAROLINA

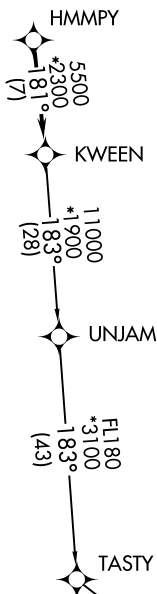
# KWEEN FIVE DEPARTURE (RNAV)

CHARLOTTE DEP CON  
120.05 307.8  
ASOS  
135.775  
CLNC DEL  
132.55  
UNICOM  
122.7

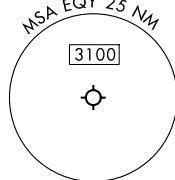
RNAV 1 - DME/DME/IRU or GPS.

RADAR required.

**TOP ALTITUDE:  
3000**



TAKEOFF MINIMUMS  
Rwys 5, 23: Standard.



- NOTE: For turbo jets only.
- NOTE: Transponder code will be issued via PDC or Charlotte CLNC DEL.
- NOTE: If unable to accept climb rates, advise ATC on initial contact.
- NOTE: Upon reaching 10000 MSL, accelerate to and maintain 280K, if unable advise ATC.

NOTE: Chart not to scale.

## DEPARTURE ROUTE DESCRIPTION

Climb on heading assigned by ATC, on RADAR vectors to HMMPY, then on track 181° to KWEEN, then on assigned transition, maintain 3000, expect filed altitude within 10 minutes after departure.

- PITRW TRANSITION (KWEEN5.PITRW)
- UNJAM TRANSITION (KWEEN5.UNJAM)

# KWEEN FIVE DEPARTURE (RNAV)

(KWEEN5.KWEEN) 21MAR24

MONROE, NORTH CAROLINA  
CHARLOTTE/MONROE EXEC (EQY)

SE-2, 16 APR 2026 to 14 MAY 2026

SE-2, 16 APR 2026 to 14 MAY 2026