

|             |          |             |
|-------------|----------|-------------|
| APP CRS     | Rwy Ldg  | <b>5646</b> |
| <b>090°</b> | TDZE     | <b>590</b>  |
|             | Apt Elev | <b>590</b>  |

# RNAV (GPS) RWY 9

ERIE-OTTAWA INTL (PCW)

RNP APCH - GPS.

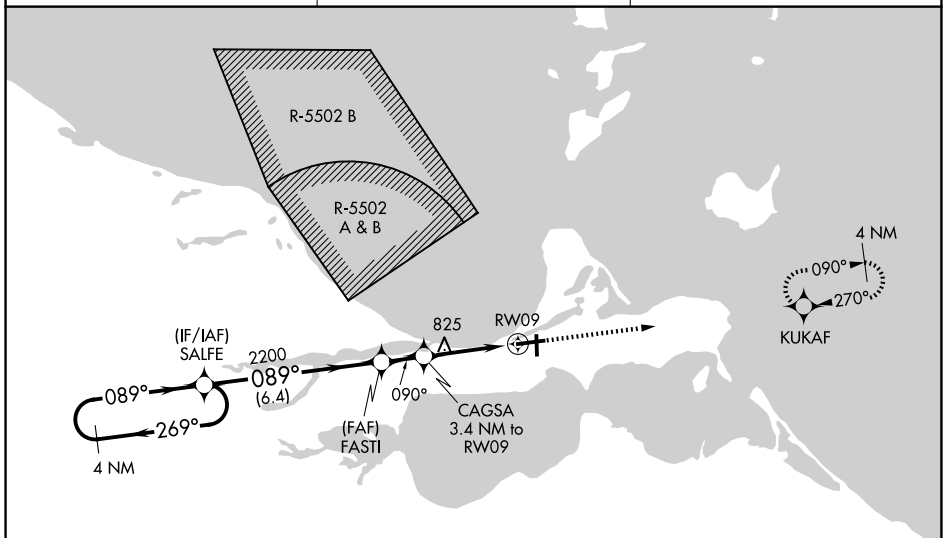
**⚠** When local altimeter setting not received, use Toledo Executive altimeter setting and increase all MDA 80 feet and all Cat C/D visibilities ¼ mile. Rwy 9 helicopter visibility reduction below ¾ SM NA. Circling Rwy 18, 36 NA at night.

**MISSED APPROACH:**  
Climb to 2500 direct KUKAF and hold.

AWOS-3  
**118.775**

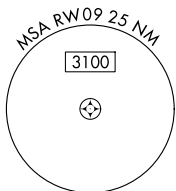
CLEVELAND APP CON  
**126.35 346.325**

UNICOM  
**122.8 (CTAF) 0**

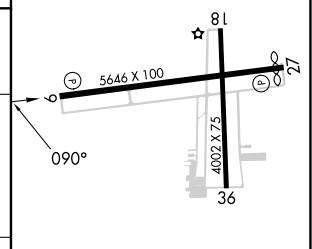
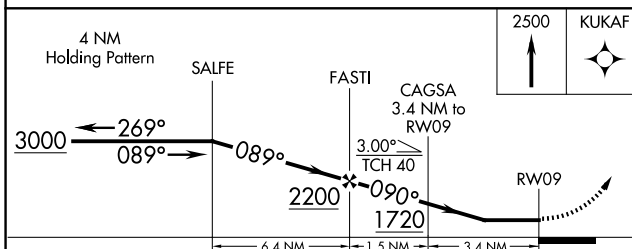


EC-2, 16 APR 2026 to 14 MAY 2026

EC-2, 16 APR 2026 to 14 MAY 2026



|          |          |
|----------|----------|
| ELEV 590 | TDZE 590 |
|----------|----------|



| CATEGORY | A      | B           | C                       | D                      |
|----------|--------|-------------|-------------------------|------------------------|
| RNAV MDA | 1140-1 | 550 (600-1) | 1140-1½                 | 550 (600-1½)           |
| CIRCLING | 1140-1 | 550 (600-1) | 1180-1½<br>590 (600-1½) | 1580-3<br>990 (1000-3) |

HIRL Rwy 9-27 0  
MIRL Rwy 18-36 0  
REIL Rwys 9 and 27 0