

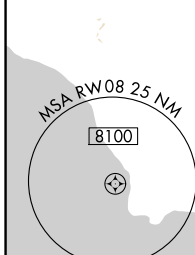
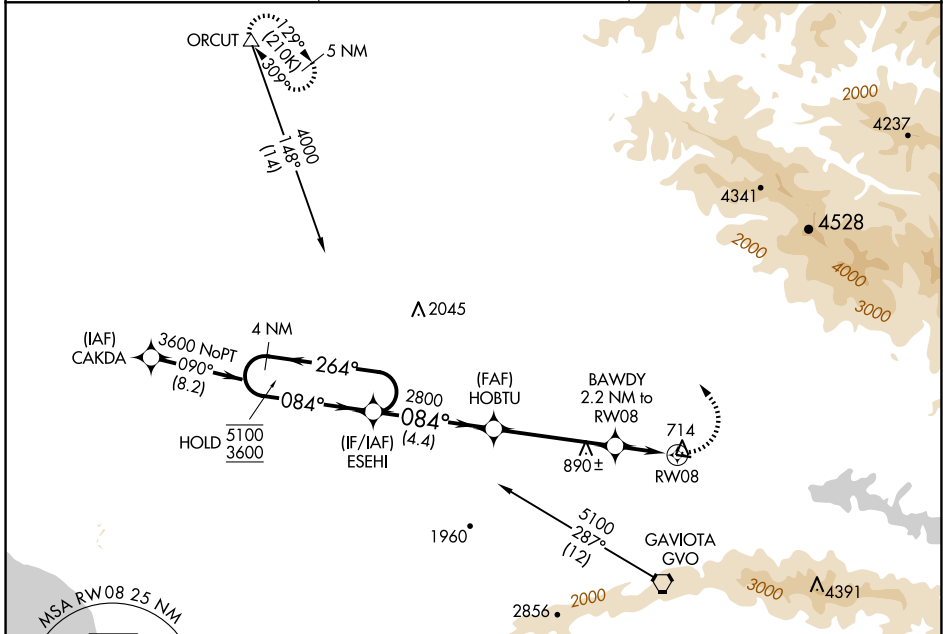
APP CRS	Rwy Ldg	<b>2803</b>
<b>084°</b>	TDZE	<b>674</b>
	Apt Elev	<b>674</b>

# RNAV (GPS) RWY 8

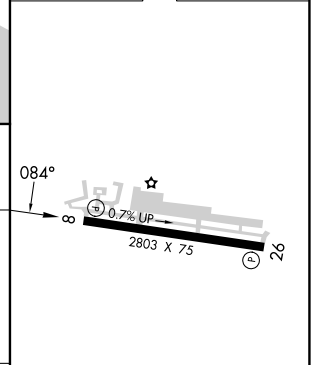
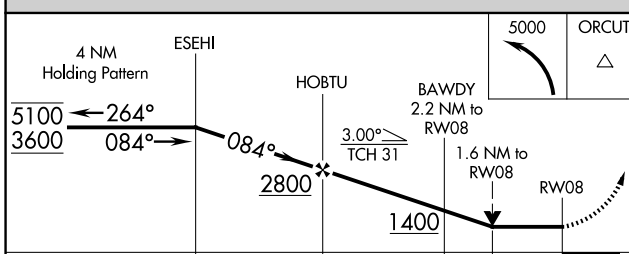
SANTA YNEZ/KUNKLE FLD (IZA)

RNP APCH-GPS.	MISSED APPROACH: Climbing left turn to 5000 direct ORCUT and hold.
<p><b>▼</b> Rwy 8 helicopter visibility reduction below 3/4 SM NA.</p> <p><b>▲</b> Circling Rwy 8 NA at night.</p>	

AWOS-3PT <b>118.075</b>	SANTA BARBARA APP CON* <b>124.15 327.8</b>	UNICOM <b>122.8 (CTAF) 0</b>
----------------------------	---	---------------------------------



ELEV 674	TDZE 674
----------	----------



CATEGORY	A	B	C	D
LNVA MDA	1180-1	506 (600-1)		NA
CIRCLING	1220-1 546 (600-1)	1340-1 666 (700-1)		NA

REIL Rws 8 and 26 0  
MIRL Rwy 8-26 0

SW-3, 16 APR 2026 to 14 MAY 2026

SW-3, 16 APR 2026 to 14 MAY 2026