

(DAWNN1.DAWNN) 23334  
**DAWNN ONE DEPARTURE**

AL-5733 (FAA)

EAGLE CREEK AIRPARK (EYE)  
 INDIANAPOLIS, INDIANA

**TOP ALTITUDE:  
 ASSIGNED BY ATC**

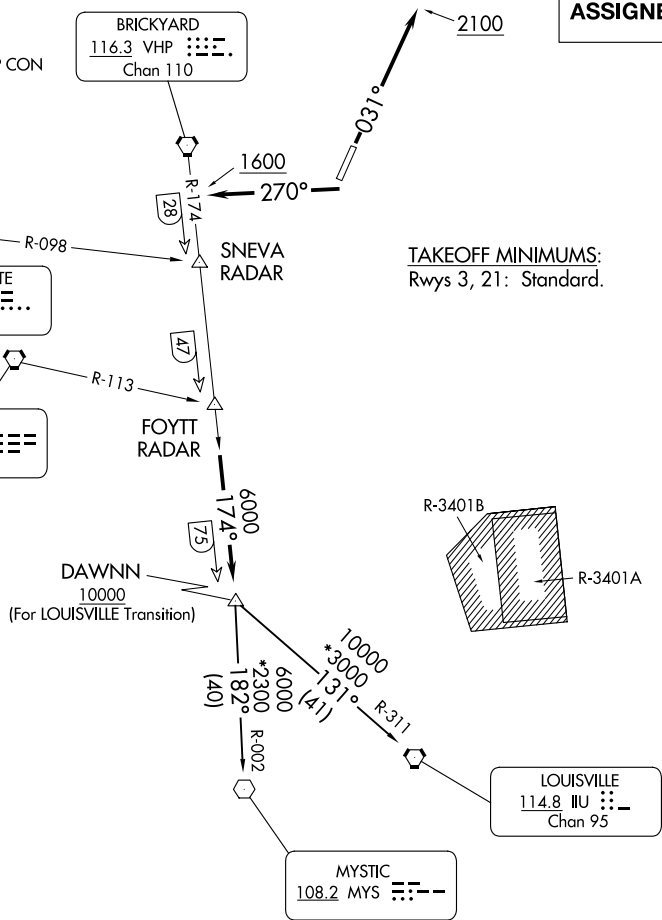
ASOS  
 121.575  
 CLNC DEL  
 128.6  
 INDIANAPOLIS DEP CON  
 119.05 317.8

BRICKYARD  
 116.3 VHP  
 Chan 110

TERRE HAUTE  
 115.3 TTH  
 Chan 100

HOOSIER  
 110.2 OOM  
 Chan 39

TAKEOFF MINIMUMS:  
 Rwy 3, 21: Standard.



EC-2, 16 APR 2026 to 14 MAY 2026

EC-2, 16 APR 2026 to 14 MAY 2026

- NOTE: RADAR required.
- NOTE: Select appropriate localizer/DME frequency/channel prior to departure.
- NOTE: Turbojets accelerate to 250K until reaching 10000, if unable advise ATC.
- NOTE: Assigned to aircraft with a requested altitude of 11000 or above.

(NARRATIVE ON FOLLOWING PAGE)

NOTE: Chart not to scale.

**DAWNN ONE DEPARTURE**  
 (DAWNN1.DAWNN) 07DEC17

INDIANAPOLIS, INDIANA  
 EAGLE CREEK AIRPARK (EYE)



DEPARTURE ROUTE DESCRIPTION

TAKEOFF RWY 3: Climb heading 031° to 2100, then on assigned heading to assigned altitude. Thence....

TAKEOFF RWY 21: Climb heading 270° to 1600, then on assigned heading to assigned altitude. Thence....

...on RADAR vectors to join VHP R-174 to DAWNN INT then on transition or assigned route. Expect clearance to requested altitude ten minutes after departure.

LOUISVILLE TRANSITION (DAWNN1.IIU): From over DAWNN INT on IIU R-311 to IIU VORTAC.

MYSTIC TRANSITION (DAWNN1.MYS): From over DAWNN INT on MYS R-002 to MYS VOR.

EC-2, 16 APR 2026 to 14 MAY 2026

EC-2, 16 APR 2026 to 14 MAY 2026