


(OOM5.OOM) 23334

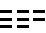
# HOOSIER FIVE DEPARTURE

AL-5733 (FAA)

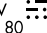
EAGLE CREEK AIRPARK (EYE)  
INDIANAPOLIS, INDIANA

ASOS  
121.575  
CLNC DEL  
128.6  
INDIANAPOLIS DEP CON  
119.05 317.8

BRICKYARD  
116.3 VHP   
Chan 110

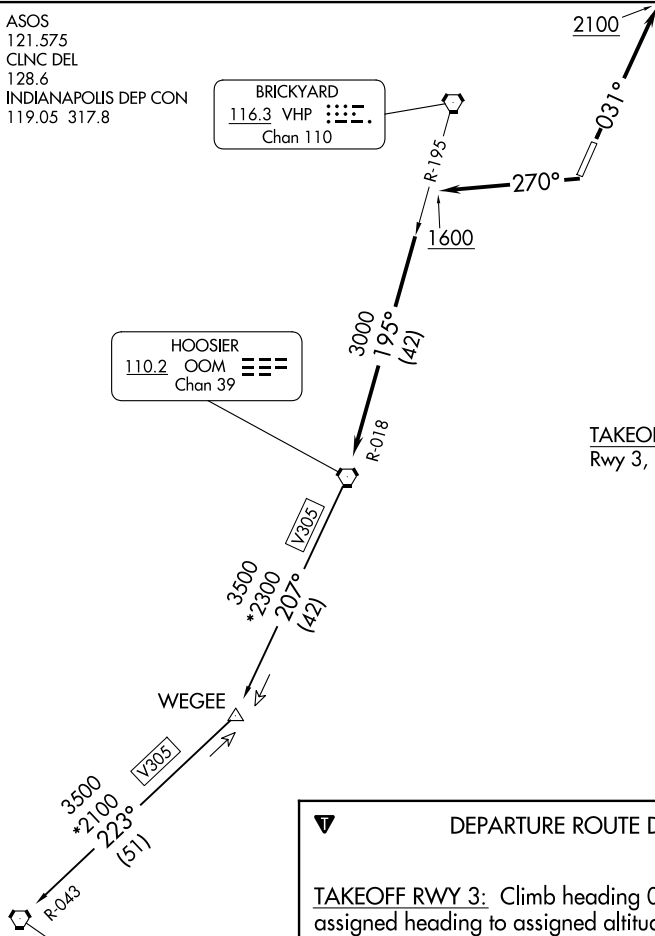
HOOSIER  
110.2 OOM   
Chan 39

WEGEE  
113.3 WEG   
Chan 80

POCKET CITY  
113.3 PXV   
Chan 80

**TOP ALTITUDE:  
ASSIGNED BY ATC**

TAKEOFF MINIMUMS:  
Rwy 3, 21: Standard.



**DEPARTURE ROUTE DESCRIPTION**

TAKEOFF RWY 3: Climb heading 031° to 2100, then on assigned heading to assigned altitude. Thence....

TAKEOFF RWY 21: Climb heading 270° to 1600, then on assigned heading to assigned altitude. Thence....

...expect RADAR vectors to join VHP R-195 to OOM VORTAC then via transition or assigned route. Expect clearance to requested altitude ten minutes after departure.

POCKET CITY TRANSITION (OOM5.PXV): From over OOM VORTAC via OOM R-207 to WEGEE, then via PXV R-043 to PXV VORTAC.

- NOTE: RADAR required.
- NOTE: Select appropriate localizer/DME frequency/channel prior to departure.
- NOTE: Turbojets accelerate to 250K until reaching 10000, if unable advise ATC.
- NOTE: Assigned to aircraft with a requested altitude of 11000 or above.

NOTE: Chart not to scale.

EC-2, 16 APR 2026 to 14 MAY 2026

EC-2, 16 APR 2026 to 14 MAY 2026

**HOOSIER FIVE DEPARTURE**  
(OOM5.OOM) 01FEB18

INDIANAPOLIS, INDIANA  
EAGLE CREEK AIRPARK (EYE)