

(MEARZ7.MEARZ) 23334

MEARZ SEVEN DEPARTURE

AL-5733 (FAA)

EAGLE CREEK AIRPARK (EYE)
INDIANAPOLIS, INDIANA

**TOP ALTITUDE:
ASSIGNED BY ATC**

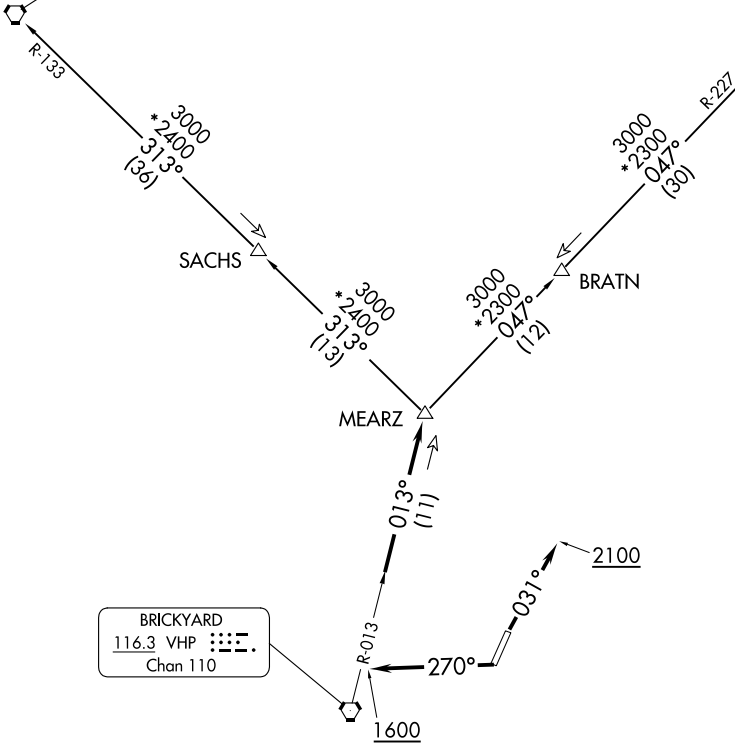
RADAR required.

ASOS
121.575
CLNC DEL
128.6
INDIANAPOLIS DEP CON
119.05 317.8

BOILER
115.1 BVT
Chan 98

MARION
108.6 MZZ
Chan 23

BRICKYARD
116.3 VHP
Chan 110

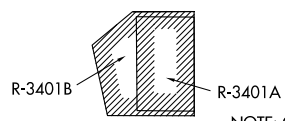


TAKEOFF MINIMUMS

Rwy 3, 21: Standard.

- NOTE: Turbojets accelerate to 250K until reaching 10000, if unable advise ATC.
- NOTE: Assigned to aircraft with a requested altitude of 11000 or above.
- NOTE: Select appropriate localizer/DME frequency/channel prior to departure.

(NARRATIVE ON FOLLOWING PAGE)



NOTE: Chart not to scale.

EC-2, 16 APR 2026 to 14 MAY 2026

EC-2, 16 APR 2026 to 14 MAY 2026

MEARZ SEVEN DEPARTURE

(MEARZ7.MEARZ) 19MAY22

INDIANAPOLIS, INDIANA
EAGLE CREEK AIRPARK (EYE)



DEPARTURE ROUTE DESCRIPTION

TAKEOFF RUNWAY 3: Climb on heading 031° to 2100 before turning on course. Thence....

TAKEOFF RUNWAY 21: Climb on heading 270° to 1600 then on assigned heading to assigned altitude. Thence....

....expect RADAR vectors to join VHP R-013 to MEARZ then on transition or assigned route. Expect clearance to requested altitude ten minutes after departure.

BOILER TRANSITION (MEARZ7.BVT): From over MEARZ on BVT R-133 to BVT VORTAC.

MARION TRANSITION (MEARZ7.MZZ): From over MEARZ on MZZ R-227 to MZZ VOR/DME.

EC-2, 16 APR 2026 to 14 MAY 2026

EC-2, 16 APR 2026 to 14 MAY 2026