

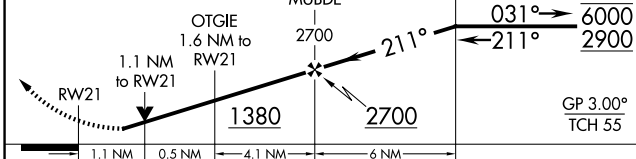
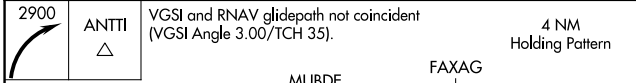
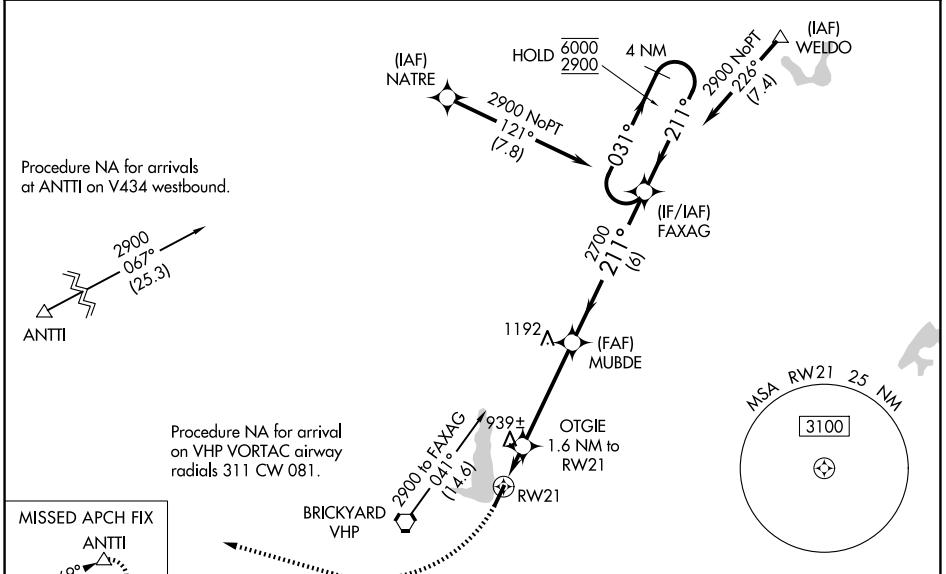
WAAS CH <b>82509</b> <b>W21A</b>	APP CRS <b>211°</b>	Rwy Ldg TDZE Apt Elev	<b>4200</b> <b>823</b> <b>823</b>
----------------------------------------	------------------------	-----------------------------	-----------------------------------------

# RNAV (GPS) RWY 21

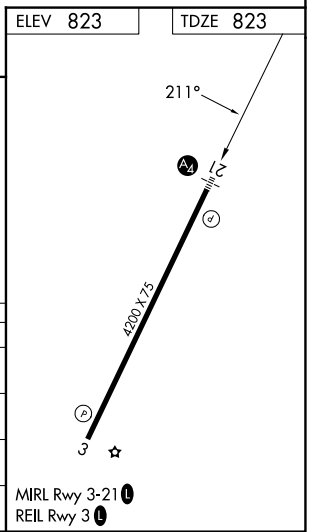
EAGLE CREEK AIRPARK (EYE)

RNP APCH - GPS.		MALS	MISSED APPROACH: Climbing right turn to 2900 direct ANTTI and hold.
<p>▼ Rwy 21 helicopter visibility reduction below 3/4 SM NA. Baro-VNAV and VDP NA when using Indianapolis Intl altimeter setting. For uncompensated Baro-VNAV systems, LNAV/VNAV NA below 0°C or above 54°C. Inop table does not apply. When local altimeter setting not received, use Indianapolis Intl altimeter setting and increase all MDAs 20 feet.</p>			

ASOS <b>121.575</b>	INDIANAPOLIS APP CON <b>119.05 317.8</b>	UNICOM <b>122.8 (CTAF)</b>
------------------------	---------------------------------------------	-------------------------------



CATEGORY	A	B	C	D
LPV DA	1091-1	268 (300-1)		NA
LNAV/VNAV DA	1076-1	253 (300-1)		NA
LNAV MDA	1200-1	377 (400-1)		NA
CIRCLING	1320-1	497 (500-1)	1500-2 677 (700-2)	NA



EC-2, 16 APR 2026 to 14 MAY 2026

EC-2, 16 APR 2026 to 14 MAY 2026