

|                        |                        |
|------------------------|------------------------|
| APP CRS<br><b>272°</b> | Rwy Idg<br><b>3013</b> |
|                        | TDZE<br><b>197</b>     |
|                        | Apt Elev<br><b>197</b> |

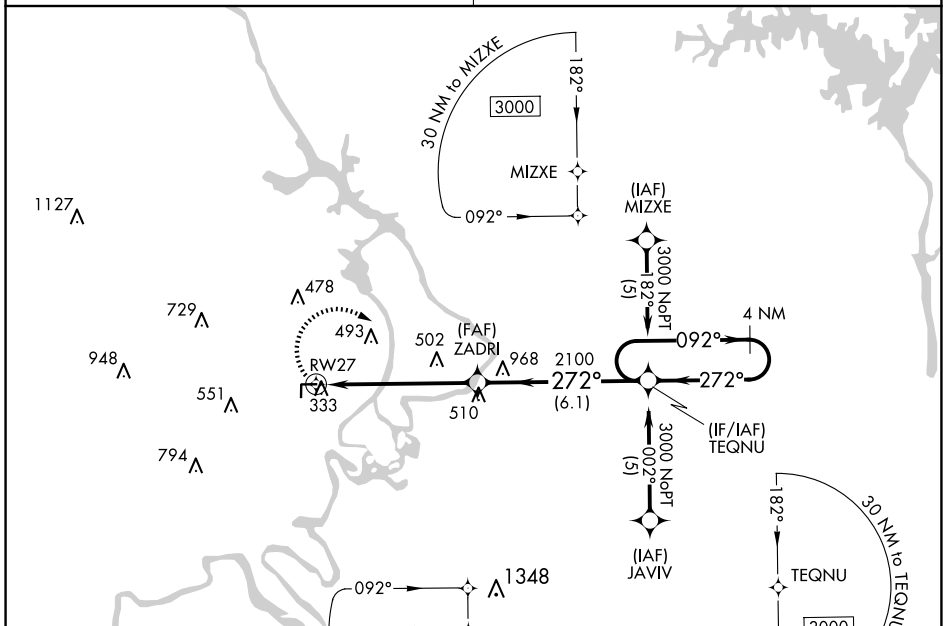
# RNAV (GPS) RWY 27

WETUMPKA MUNI (Ø8A)

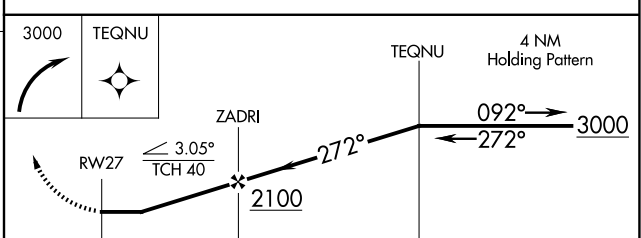
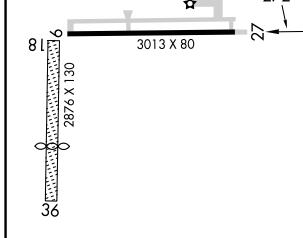
**⚠ NA** DME/DME RNP-0.3 NA. Helicopter visibility reduction below 1 SM NA. Use Montgomery Rgnl (Dannelly Fld) altimeter setting; when not received, use Alexander City altimeter setting; increase all MDA 120 feet, increase LNAV Cat C and Circling Cat B visibility ¼ SM, and Circling Cat C visibility ½ SM. Circling NA to Rwy 18/36. Procedure NA at night.

**MISSED APPROACH:**  
Climbing right turn to 3000 direct TEQNU and hold.

|   |                                  |
|---|----------------------------------|
| MONTGOMERY APP CON ★<br><b>121.2 269.05</b> | UNICOM<br><b>123.05 (CTAF) 0</b> |
|---|----------------------------------|



|          |          |
|----------|----------|
| ELEV 197 | TDZE 197 |
|----------|----------|



| CATEGORY | A                    | B                    | C                      | D  |
|----------|----------------------|----------------------|------------------------|----|
| LNAV MDA | 800-1                | 603 (700-1)          | 800-1¾<br>603 (700-1¾) | NA |
| CIRCLING | 800-1<br>603 (700-1) | 900-1<br>703 (800-1) | 960-2¼<br>763 (800-2¼) | NA |

SE-4, 16 APR 2026 to 14 MAY 2026

SE-4, 16 APR 2026 to 14 MAY 2026