

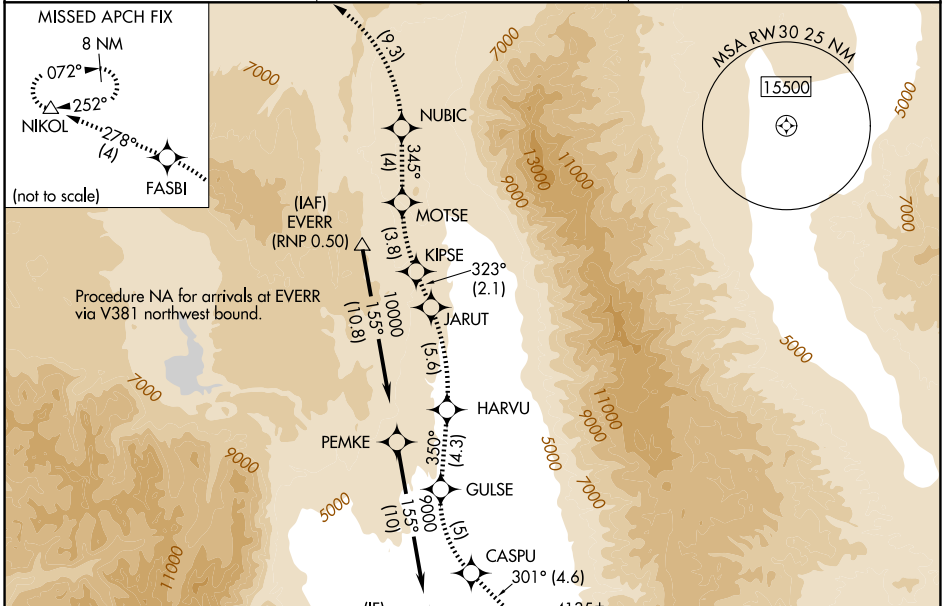
APP CRS 301°	Rwy Ldg 6743
	TDZE 4111
	Apt Elev 4124

RNAV (RNP) RWY 30

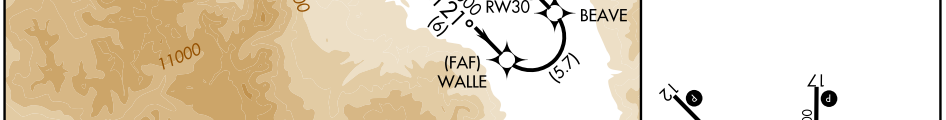
BISHOP (BIH)

RNP AR APCH, RF required.		<p>MISSED APPROACH: Climb to 13000 via 301° track to CASPU, right turn to GULSE, 350° track to HARVU, left turn to JARUT, 323° track to KIPSE, right turn to MOTSE, 345° track to NUBIC, left turn to FASBI, 278° track to NIKOL and hold.</p>
<p>NA For uncompensated Baro-VNAV systems, procedure NA below -12°C or above 54°C.</p>		

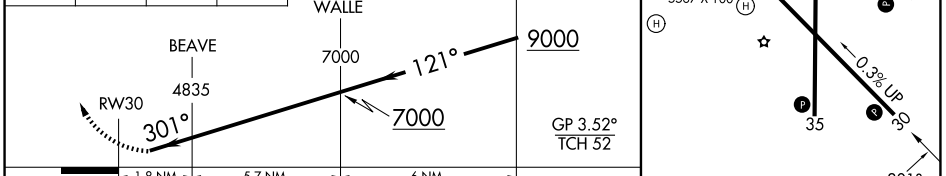
ASOS 119.025	OAKLAND CENTER 125.75 284.65	UNICOM 123.0 (CTAF)
------------------------	--	-------------------------------



ELEV 4124	TDZE 4111
-----------	-----------



13000 CASPU	GULSE	Procedure Turn NA
301° fr		



CATEGORY	A	B	C	D
RNP 0.30 DA	4476-1	365 (400-1)		NA

AUTHORIZATION REQUIRED

MIRL Rwy 8-26, 12-30, and 17-35
REIL Rwy 12, 17, 30 and 35

SW-2, 16 APR 2026 to 14 MAY 2026

SW-2, 16 APR 2026 to 14 MAY 2026