

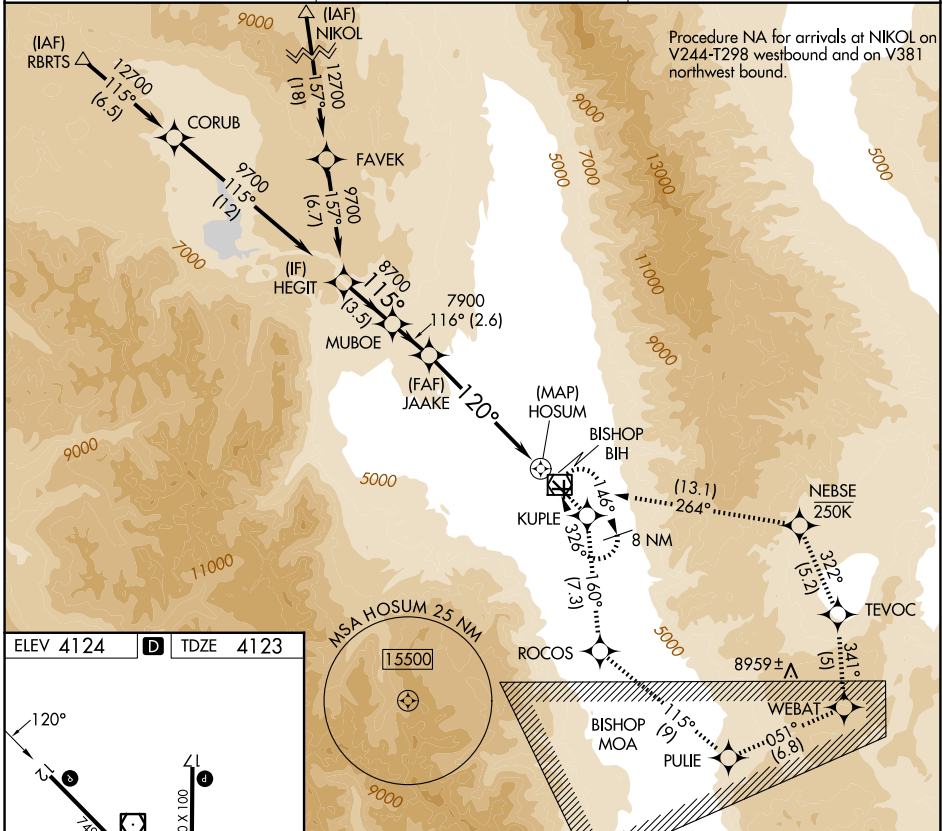
APP CRS	Rwy Ldg	<b>7098</b>
<b>120°</b>	TDZE	<b>4123</b>
	Apt Elev	<b>4124</b>

# RNAV (GPS) Y RWY 12

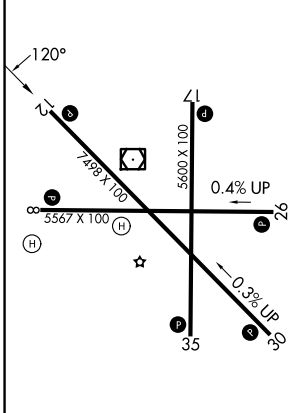
BISHOP (BIH)

RNP APCH-GPS.	MISSED APPROACH: (Do not exceed 250 KIAS until NEBSE) Climb to 13000 direct KUPLE and on track 160° to ROCOS and on track 115° to PULIE and on track 051° to WEBAT and on track 341° to TEVOC and on track 322° to NEBSE and on track 264° to BIH VOR/DME and hold.
<p><b>▼</b> Rwy 12, helicopter visibility reduction below ¾ SM NA.</p> <p><b>▲</b></p>	

ASOS <b>119.025</b>	OAKLAND CENTER <b>125.75 284.65</b>	UNICOM <b>123.0 (CTAF) 0</b>
------------------------	--	---------------------------------

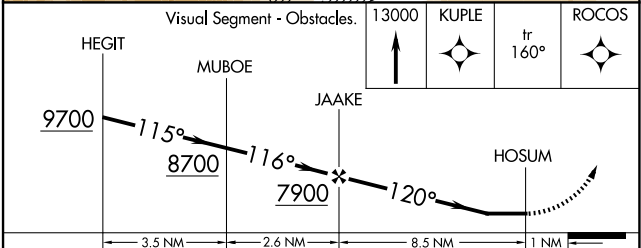


ELEV 4124	<b>D</b>	TDZE 4123
-----------	----------	-----------



MIRL Rwy 8-26, 12-30, and 17-35 **0**

REIL Rwy 12, 17, 30 and 35



CATEGORY	A	B	C	D
LNAV MDA	6600-1¼ 2477 (2500-1¼)	6600-1½ 2477 (2500-1½)	6600-3 2477 (2500-3)	NA

SW-2, 16 APR 2026 to 14 MAY 2026

SW-2, 16 APR 2026 to 14 MAY 2026