

|  |                        |   |
|--|------------------------|---|
| WAAS<br>CH <b>40116</b><br><b>W15A</b> | APP CRS<br><b>154°</b> | Rwy Idg <b>4000</b><br>TDZE <b>928</b><br>Apt Elev <b>928</b> |
|--|------------------------|---|

# RNAV (GPS) RWY 15

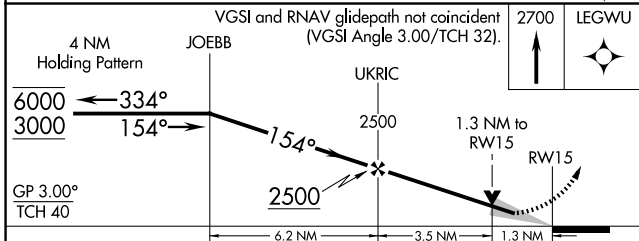
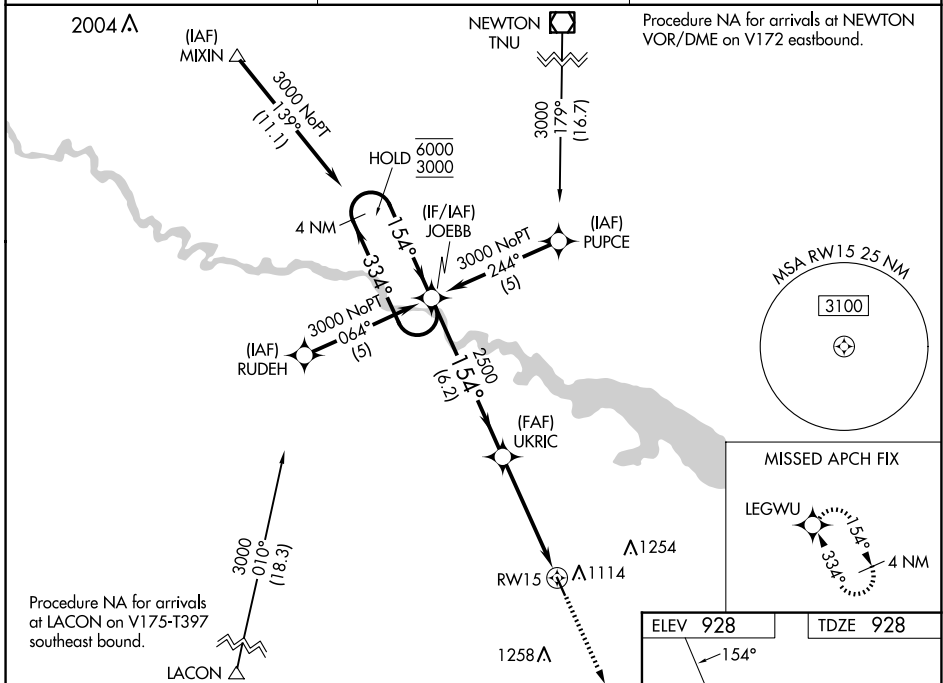
KNOXVILLE MUNI (OXV)

RNP APCH - GPS.

⚠ For uncompensated Baro-VNAV systems, LNAV/VNAV NA below -16°C or above 54°C.  
 ⚠ Baro-VNAV and VDP NA when using PEA altimeter setting. When local altimeter setting not received, use PEA altimeter setting; increase LPV DA to 1271 feet; increase LNAV/VNAV DA to 1389 feet and all visibilities 1/8 SM; increase all MDAs 40 feet.

MISSED APPROACH: Climb to 2700 direct LEGWU and hold.

|                          |   |                                 |
|--------------------------|---|---------------------------------|
| AWOS-3<br><b>119.775</b> | DES MOINES APP CON<br><b>123.9 307.15</b> | UNICOM<br><b>122.8 (CTAF) 0</b> |
|--------------------------|---|---------------------------------|



|          |          |
|----------|----------|
| ELEV 928 | TDZE 928 |
|----------|----------|

154°

2700

LEGWU

4000 x .75

33

MIRL Rwy 15-33 0

REIL Rwy 15 and 33 0

| CATEGORY     | A       | B            | C | D  |
|--------------|---------|--------------|---|----|
| LPV DA       | 1242-1  | 314 (400-1)  |   | NA |
| LNAV/VNAV DA | 1360-1¼ | 432 (500-1¼) |   | NA |
| LNAV MDA     | 1360-1  | 432 (500-1)  |   | NA |
| CIRCLING     | 1480-1  | 552 (600-1)  |   | NA |

NC-3, 16 APR 2026 to 14 MAY 2026

NC-3, 16 APR 2026 to 14 MAY 2026