


WAAS CH <b>56513</b> <b>W04A</b>	APP CRS <b>042°</b>	Rwy Ldg TDZE Apt Elev	<b>7099</b> <b>158</b> <b>158</b>
--	------------------------	-----------------------------	---

# RNAV (GPS) RWY 4

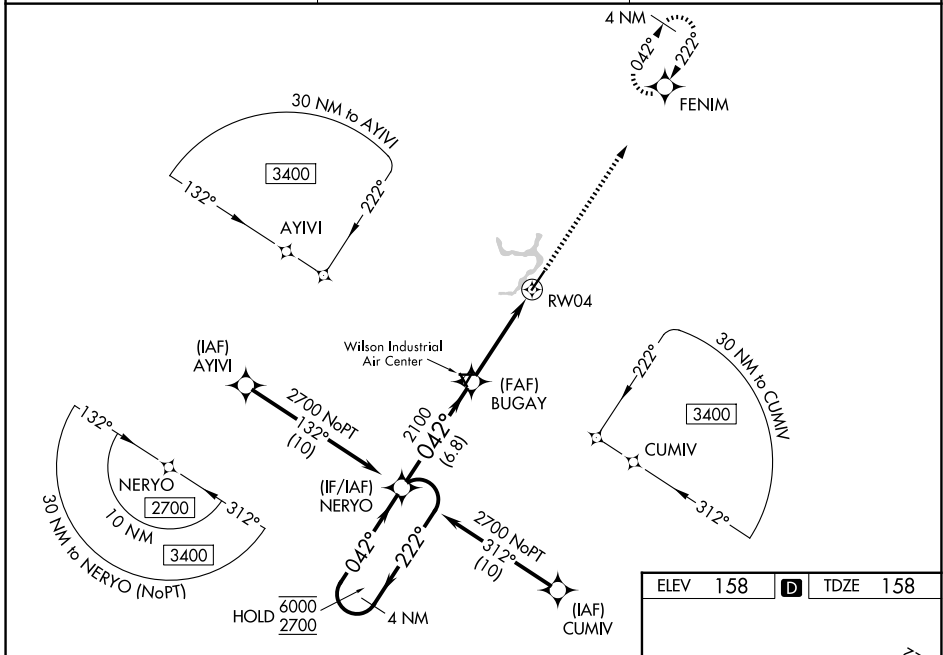
ROCKY MOUNT/WILSON RGNL (R.WI)

RNP APCH - GPS.

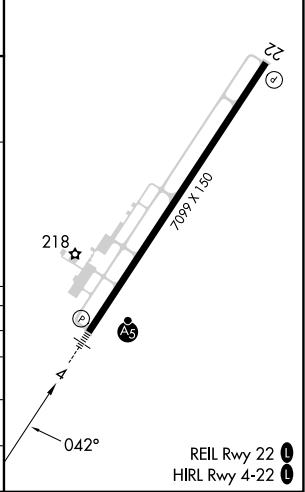
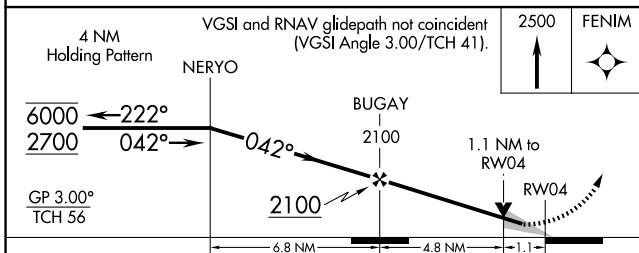
▼ Baro-VNAV and VDP NA when using GWW altimeter setting. For uncompensated Baro-VNAV systems, LNAV/VNAV NA below -7°C or above 54°C. When local altimeter setting not received, use GWW altimeter setting and increase LPV DA to 467 feet; increase LNAV/VNAV DA to 601 feet and all visibilities ¼ SM, increase all MDAs 60 feet and LNAV Cats C/D and Circling Cat C visibilities ¼ SM. For inop ALS, increase LNAV Cats C/D visibility to 1/8 SM. For inop ALS when using GWW altimeter setting, increase LPV all Cats visibility to 7/8 SM.

MALSR  MISSED APPROACH: Climb to 2500 direct FENIM and hold.

ASOS <b>118.875</b>	WASHINGTON CENTER <b>123.85 279.65</b>	UNICOM <b>123.05 (CTAF) ①</b>
------------------------	---	----------------------------------



ELEV 158	<b>D</b>	TDZE 158
----------	----------	----------



CATEGORY	A	B	C	D
LPV DA		408-1/2	250 (300-1/2)	
LNAV/VNAV DA		542-5/8	384 (400-3/4)	
LNAV MDA	560-1/2	402 (500-1/2)	560-3/4	402 (500-3/4)
CIRCLING	600-1 442 (500-1)	620-1 462 (500-1)	720-1 1/2 562 (600-1 1/2)	740-2 582 (600-2)

SE-2, 16 APR 2026 to 14 MAY 2026

SE-2, 16 APR 2026 to 14 MAY 2026