

WAAS CH 82222 W33A	APP CRS 333°	Rwy Idg TDZE Apt Elev	4400 830 833
--	------------------------	-----------------------------	---

RNAV (GPS) RWY 33

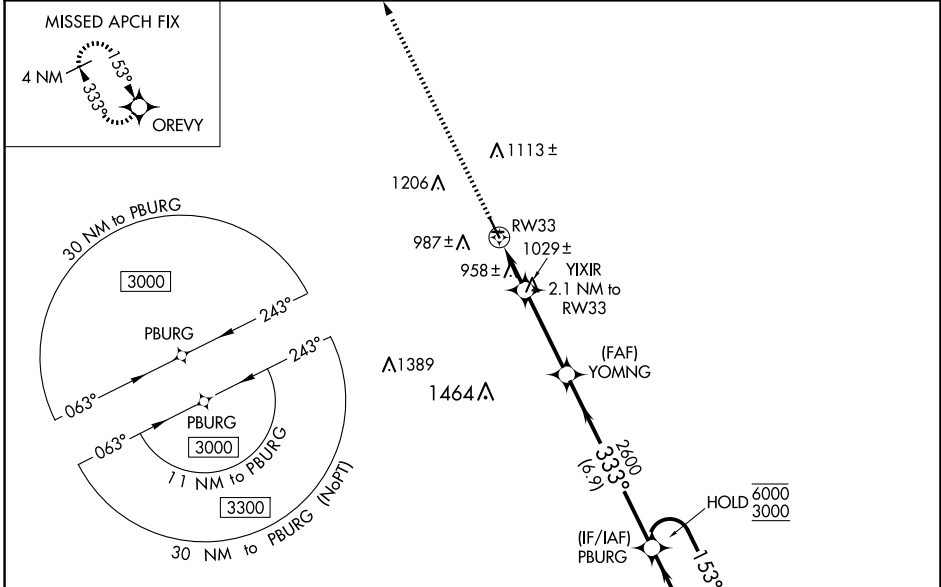
MONTICELLO RGNL (MXO)

RNP APCH - GPS.

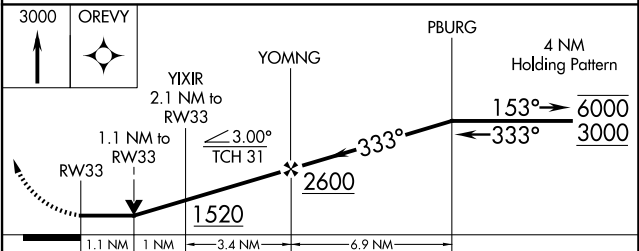
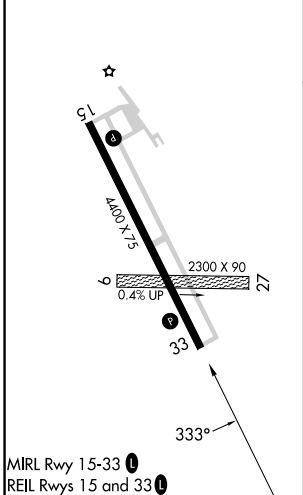
⚠ Circling NA to Rwy 9 and 27. Circling Rwy 15 NA at night. VDP NA when using Dubuque altimeter setting. Rwy 33 helicopter visibility reduction below 3/4 SM NA. When local altimeter setting not received, use Dubuque altimeter setting and increase all MDAs 100 feet; increase LP Cat C, LNAV Cat C and Circling Cat C visibility 1/4 SM.

MISSED APPROACH: Climb to 3000 direct OREVEY and hold.

AWOS-3 119.275	CEDAR RAPIDS APP CON * 134.05 266.8	UNICOM 122.8 (CTAF) 0
--------------------------	---	---------------------------------



ELEV 833	TDZE 830
----------	----------



CATEGORY	A	B	C	D
LP MDA	1220-1	390 (400-1)	1220-1 1/8 390 (400-1 1/8)	NA
LNAV MDA	1280-1	450 (500-1)	1280-1 3/8 450 (500-1 3/8)	NA
CIRCLING	1380-1 547 (600-1)	1400-1 567 (600-1)	1520-2 687 (700-2)	NA

NC-3, 16 APR 2026 to 14 MAY 2026

NC-3, 16 APR 2026 to 14 MAY 2026