

|  |                        |                             |   |
|--|------------------------|-----------------------------|---|
| WAAS<br>CH <b>81926</b><br><b>W15A</b> | APP CRS<br><b>149°</b> | Rwy ldg<br>TDZE<br>Apt Elev | <b>5000</b><br><b>327</b><br><b>336</b> |
|--|------------------------|-----------------------------|---|

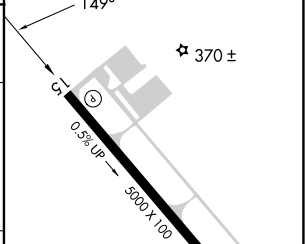
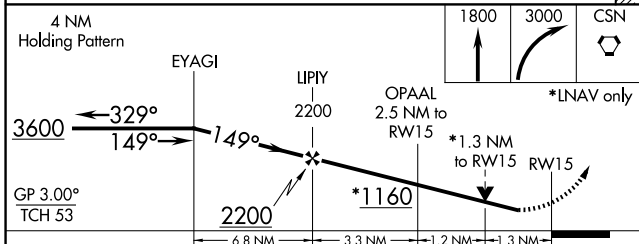
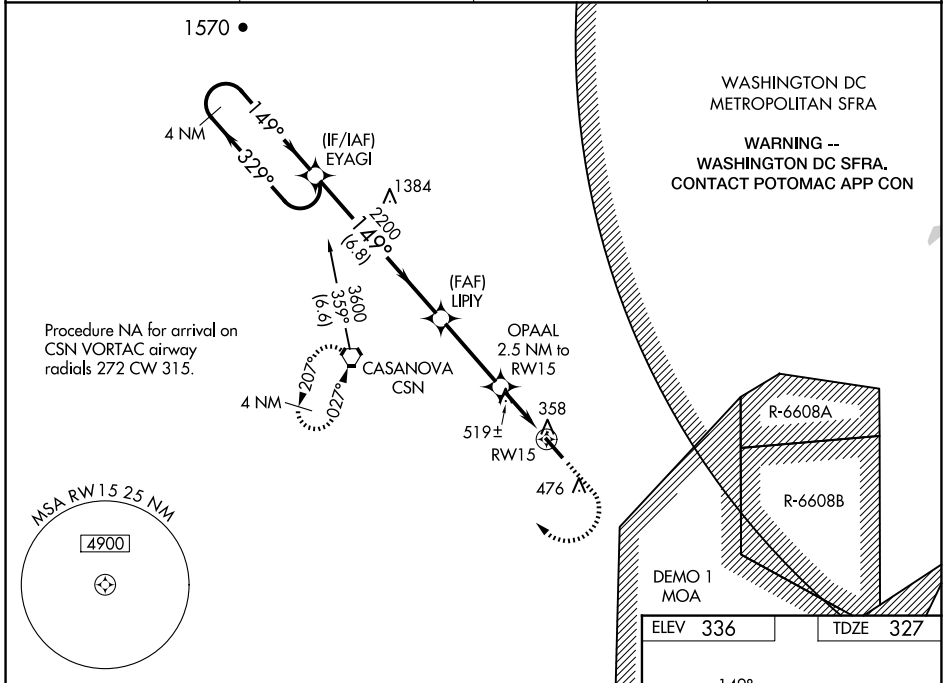
# RNAV (GPS) RWY 15

WARRENTON/FAUQUIER (HWY)

**⚠** Baro-VNAV NA when using Culppeper altimeter setting. For uncompensated Baro-VNAV systems, LNAV/VNAV NA below -11°C (13°F) or above 41°C (105°F). DME/DME RNP-0.3 NA. Helicopter visibility reduction below 3/4 SM NA. When local altimeter setting not received, use Culppeper altimeter setting: increase LPV DA to 549 feet; increase LNAV/VNAV DA to 607 feet and all visibilities 1/8 SM; increase all MDAs 40 feet and Circling Cat D visibility 1/4 SM.

**MISSED APPROACH:** Climb to 1800 then climbing right turn to 3000 direct CSN VORTAC and hold.

|                         |                              |   |                                 |
|-------------------------|------------------------------|---|---------------------------------|
| AWOS-3<br><b>120.35</b> | CJR AWOS-3<br><b>119.325</b> | POTOMAC APP CON<br><b>128.525 306.925</b> | UNICOM<br><b>122.7 (CTAF) 0</b> |
|-------------------------|------------------------------|---|---------------------------------|



| CATEGORY     | A                    | B                    | C                            | D                    |
|--------------|----------------------|----------------------|------------------------------|----------------------|
| LPV DA       |                      | 527-3/4              | 200 (200-3/4)                |                      |
| LNAV/VNAV DA |                      | 585-3/4              | 258 (300-3/4)                |                      |
| LNAV MDA     | 780-1                | 453 (500-1)          | 780-1 3/8                    | 453 (500-1 3/8)      |
| CIRCLING     | 780-1<br>444 (500-1) | 800-1<br>464 (500-1) | 880-1 1/2<br>544 (600-1 1/2) | 980-2<br>644 (700-2) |

REIL Rwy 15 and 33  
HIRL Rwy 15-33 0

NE-3, 16 APR 2026 to 14 MAY 2026

NE-3, 16 APR 2026 to 14 MAY 2026