

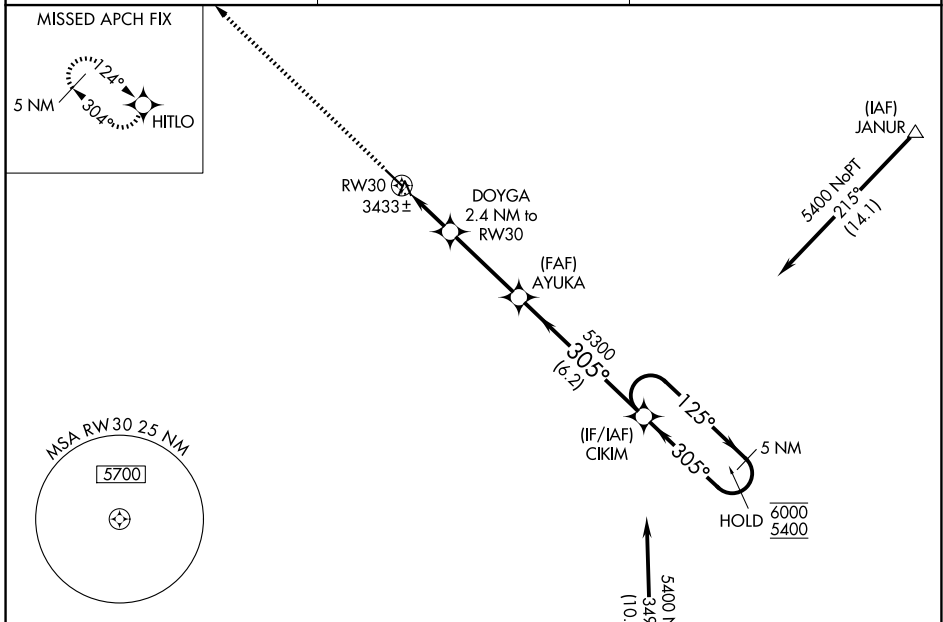
WAAS CH 93509 W30A	APP CRS 305°	Rwy Ldg 4699 TDZE 3387 Apt Elev 3394
--	------------------------	---

RNAV (GPS) RWY 30

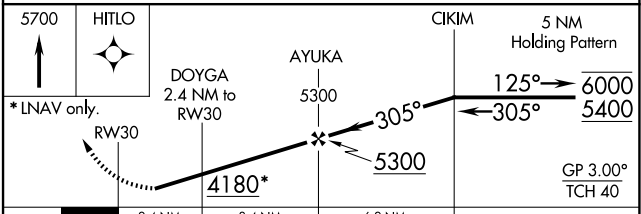
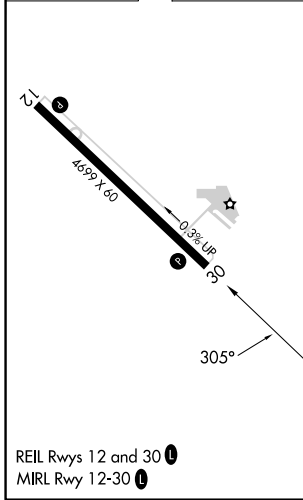
GARDEN COUNTY/KING RHILEY FLD (OKS)

RNP APCH.	MISSED APPROACH: Climb to 5700 direct HITLO and hold.
<p>▼ Rwy 30 helicopter visibility reduction below 3/4 SM NA. ▲ NA Baro-VNAV NA. Use Ogallala altimeter setting.</p>	

OGA AWOS-3 121.275	DENVER CENTER 118.475 225.4	UNICOM 122.8 (CTAF) 0
------------------------------	---------------------------------------	---------------------------------



ELEV 3394	TDZE 3387
------------------	------------------



CATEGORY	A	B	C	D
LPV DA	3734-1 1/4	347 (400-1 1/4)		NA
LNAV/VNAV DA	3792-1 1/2	405 (400-1 1/2)		NA
LNAV MDA	3880-1	493 (500-1)		NA
CIRCLING	3940-1 546 (600-1)	4180-1 786 (800-1)		NA

NC-2, 16 APR 2026 to 14 MAY 2026

NC-2, 16 APR 2026 to 14 MAY 2026