

26078

AIRPORT DIAGRAM

AL-5749 (FAA)

SHALZ FLD (CBK)
COLBY, KANSAS

AWOS-3P
118.175
CTAF/UNICOM
122.8

101°03.0'W

101°02.5'W

FIELD
ELEV
3188

39°26.0'N

RWY 17-35
S-30, D-38

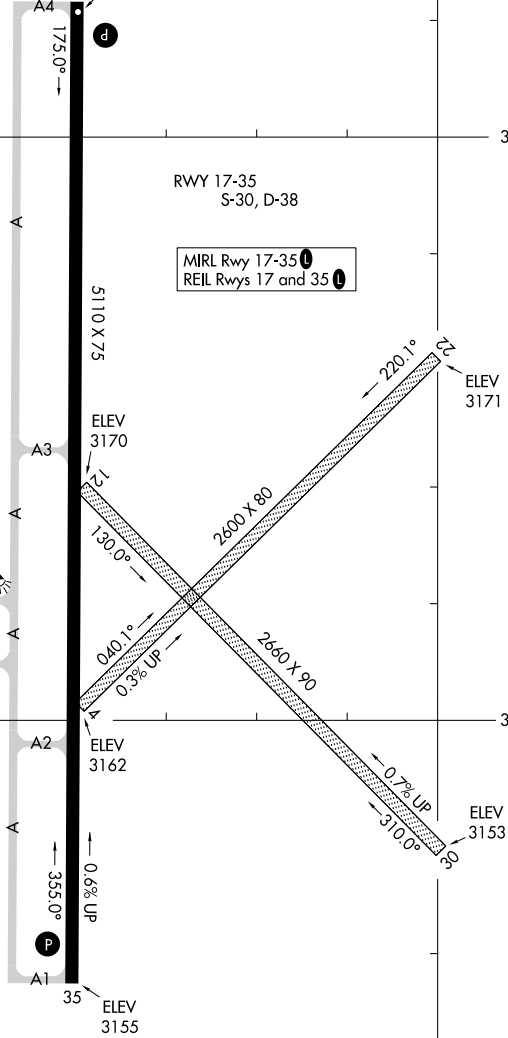
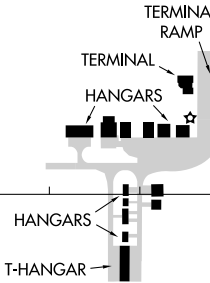
MIRL Rwy 17-35
REIL Rwy 17 and 35

JANUARY 2025
ANNUAL RATE OF CHANGE
0.1° W



NC-2, 16 APR 2026 to 14 MAY 2026

NC-2, 16 APR 2026 to 14 MAY 2026



39°25.5'N

AIRPORT DIAGRAM

26078

COLBY, KANSAS
SHALZ FLD (CBK)