

WAAS CH 78045 W17A	APP CRS 172°	Rwy Ldg TDZE 3188 Apt Elev 3188
---------------------------------	------------------------	---

RNAV (GPS) RWY 17

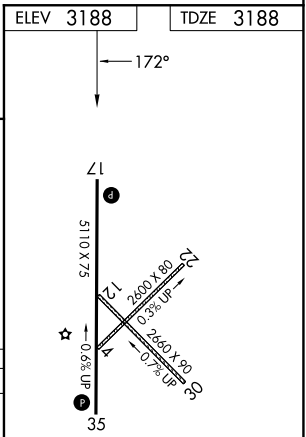
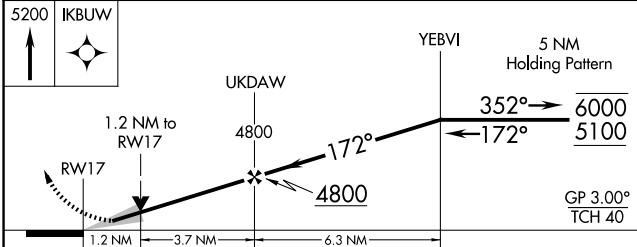
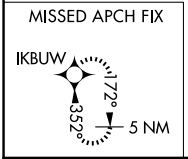
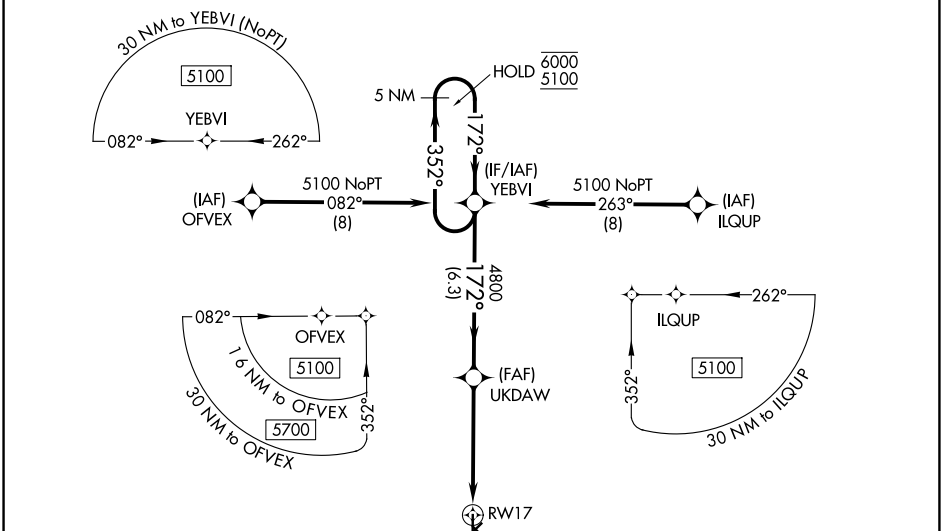
SHALZ FLD (CBK)

RNP APCH - GPS.

⚠ Baro-VNAV and VDP NA when using Oakley altimeter setting. For uncompensated Baro-VNAV systems, LNAV/VNAV NA below -21°C or above 54°C. When local altimeter setting not received, use Oakley altimeter setting: increase LPV DA to 3509 feet and all visibilities ¼ SM, LNAV/VNAV DA to 3509 feet and all visibilities ¼ SM; increase all MDAs 80 feet and visibility Cat C ¼ SM.

MISSED APPROACH: Climb to 5200 direct IKBWU and hold.

AWOS-3P 118.175	DENVER CENTER 132.7 226.675	UNICOM 122.8 (CTAF) 1
---------------------------	---------------------------------------	--



CATEGORY	A	B	C	D
LPV DA	3438-¾	250 (300-¾)		NA
LNAV/VNAV DA	3438-¾	250 (300-¾)		NA
LNAV MDA	3620-1	432 (500-1)	3620-1¼ 432 (500-1¼)	NA

MIRL Rwy 17-35 **1**
REIL Rws 17 and 35 **1**

NC-2, 16 APR 2026 to 14 MAY 2026

NC-2, 16 APR 2026 to 14 MAY 2026