

WAAS CH 50420 W30A	APP CRS 297°	Rwy Idg TDZE Apt Elev	3428 939 940
--	------------------------	-----------------------------	---

RNAV (GPS) RWY 30

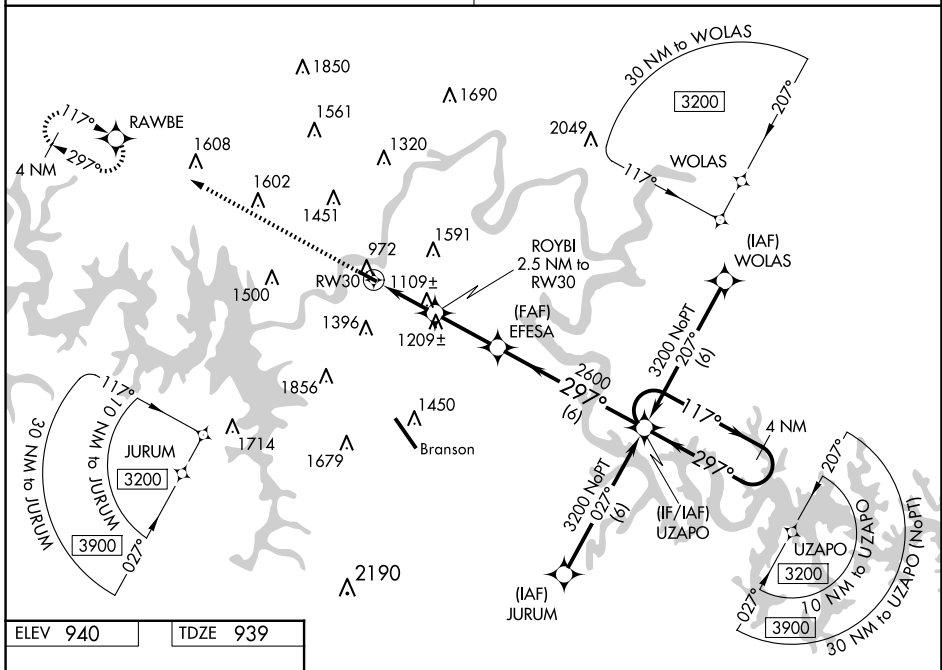
M GRAHAM CLARK DOWNTOWN (PLK)

⚠ Baro-VNAV NA when using Branson altimeter setting. For uncompensated Baro-VNAV systems, LNAV/VNAV NA below -16°C (4°F) or above 54°C (130°F). DME/DME RNP-0.3 NA. VDP NA with KBBG altimeter setting. Obtain local altimeter setting on CTAF; when not received, use Branson altimeter setting and increase all DA 65 feet and all MDA 80 feet; increase LPV and LNAV/VNAV all Cats visibility 1/4 mile.

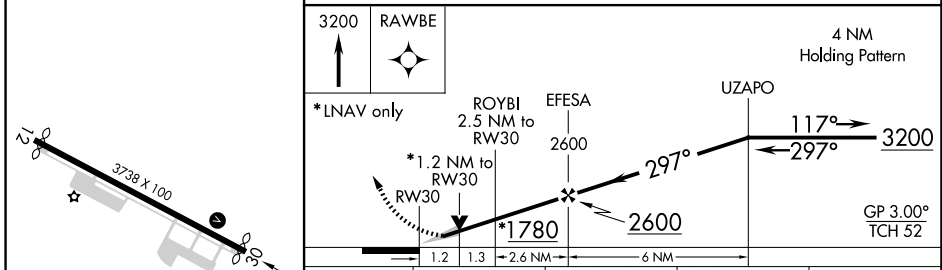
MISSED APPROACH:
Climb to 3200 direct RAWBE and hold.

SPRINGFIELD APP CON
126.35

UNICOM
122.7 (CTAF) 0



ELEV 940	TDZE 939
----------	----------



CATEGORY	A	B	C	D
LPV DA	1189-3/4	250 (300-3/4)		NA
LNAV/VNAV DA	1224-7/8	285 (300-7/8)		NA
LNAV MDA	1360-1	421 (500-1)		NA
CIRCLING	1560-1	620 (700-1)		NA

REIL Rwy 12 and 30 **0**
MIRL Rwy 12-30 **0**

NC-3, 16 APR 2026 to 14 MAY 2026

NC-3, 16 APR 2026 to 14 MAY 2026