

FORT DRUM, NEW YORK

RNAV (GPS) RWY 15

APCH CRS 147°	Rwy Idg TDZE Arprt Elev	5002 687 690
------------------	-------------------------------	--------------------

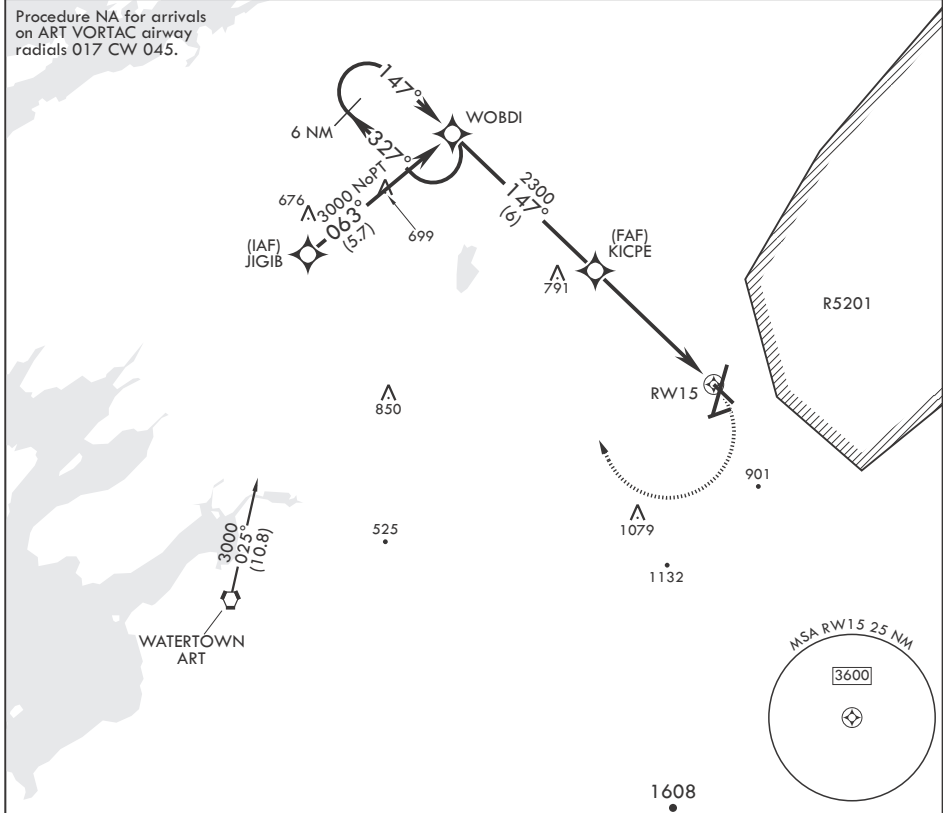
-(USA)

WHEELER SACK AAF (KGTB)

RNP APCH - GPS	MALS R	MISSED APPROACH: Climbing right turn to 3000 direct WOBDI and hold.
<p>▼ * When ALS inop, increase CAT AB vis to 1 mile; CAT CD vis to 1 3/8 miles. ** Circling NA E of Rwy 21 and 33. Circling NA for CAT BCD to Rwy 8.</p>		

ATIS 119.525	APP CON/DEP CON 124.875 307.125	TOWER 118.75 290.25	GND CON 123.65 229.8	CLNC DEL 123.65	ASR/PAR
-----------------	------------------------------------	------------------------	-------------------------	--------------------	---------

Procedure NA for arrivals on ART VORTAC airway radials 017 CW 045.



<p>6 NM Holding Pattern</p> <p>3000 ← 327° WOBDI</p> <p>→ 147°</p> <p>3.00° ≥ TCH 40</p>	<p>3000 WOBDI</p> <p>ELEV 690</p> <p>Rwy 3 Idg 8637'</p> <p>147°</p>		<p>TDZE 687</p>	
	<p>1.4 NM to RWY 15</p> <p>2300 KICPE</p> <p>5 NM</p>			
CATEGORY	A	B	C	D
LNAV MDA*	1200-3/4	513 (600-3/4)	1200-1	513 (600-1)
CIRCLING**	1200-1 510 (600-1)	1240-1 550 (600-1)	1280-1½ 590 (600-1½)	1460-2½ 770 (800-2½)

FORT DRUM, NEW YORK
Amdt 2 10AUG23

44°03'N - 75°43'W

WHEELER SACK AAF (KGTB)

RNAV (GPS) RWY 15

NE-2, 16 APR 2026 to 14 MAY 2026

NE-2, 16 APR 2026 to 14 MAY 2026

HIRL Rwys 3-21, 15-33
MIRL Rwy 8-26
RAIL Rwy 15