

RNAV (GPS) RWY 33

APCH CRS	Rwy Idg	5002
327°	TDZE	690
	Arprt Elev	690

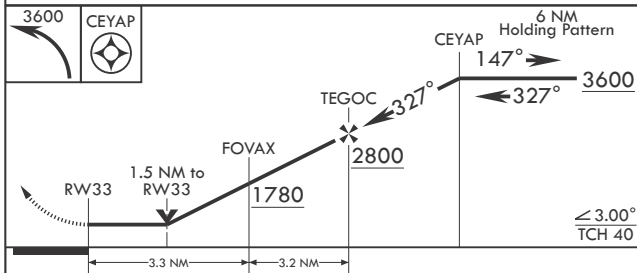
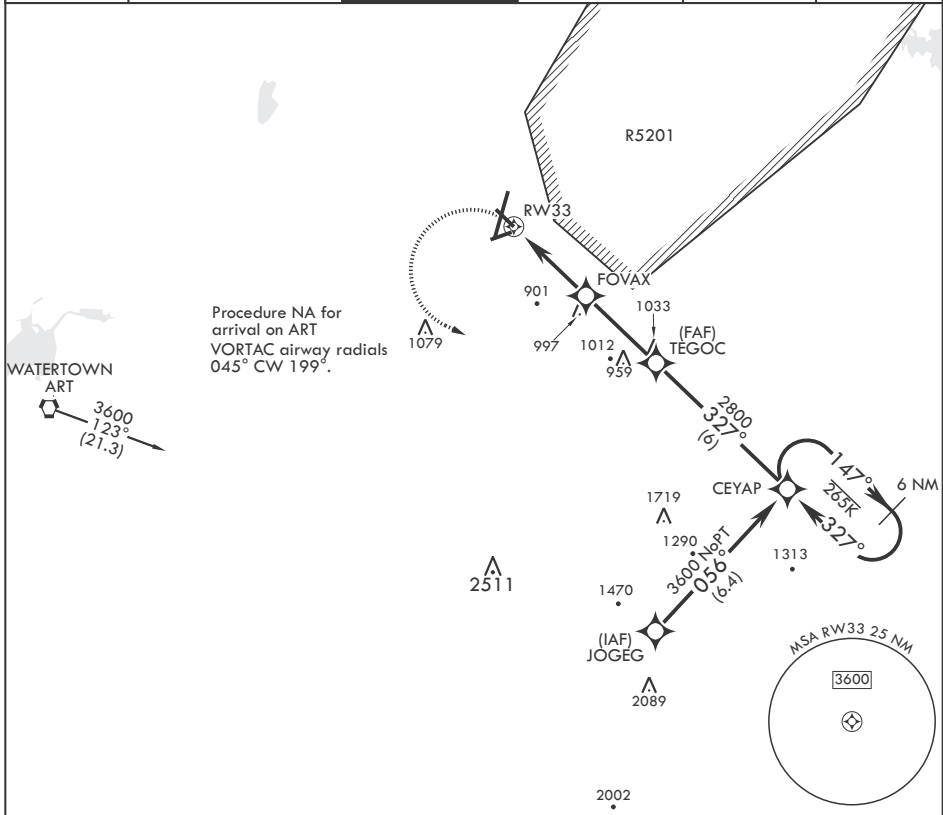
-(USA)

WHEELER SACK AAF (KGTB)

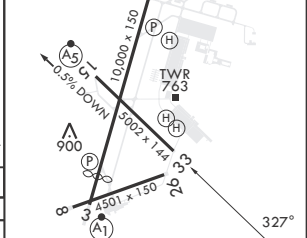
RNP APCH - GPS
 * LNAV visibility reduction by helicopters NA.
 ** Circling NA for CAT BCD to Rwy 8. Circling NA E of Rwy 21 and 33.

MISSED APPROACH: Climbing left turn to 3600 direct CEYAP and hold.

ATIS 119.525	APP CON/DEP CON 124.875 307.125	TOWER 118.75 290.25	GND CON 123.65 229.8	CLNC DEL 123.65	ASR/PAR
-----------------	------------------------------------	------------------------	-------------------------	--------------------	---------



ELEV 690	TDZE 690
Rwy 3 Idg 8637'	



CATEGORY	A	B	C	D
LNAV MDA*	1200-1 510 (600-1)	1240-1 550 (600-1)	1280-1½ 590 (600-1½)	1460-2½ 770 (800-2½)
Circling**	1200-1 510 (600-1)	1240-1 550 (600-1)	1280-1½ 590 (600-1½)	1460-2½ 770 (800-2½)

HIRL Rwwys 3-21, 15-33
 MIRL Rwy 8-26
 RAIL Rwy 15

RNAV (GPS) RWY 33

NE-2, 16 APR 2026 to 14 MAY 2026

NE-2, 16 APR 2026 to 14 MAY 2026