

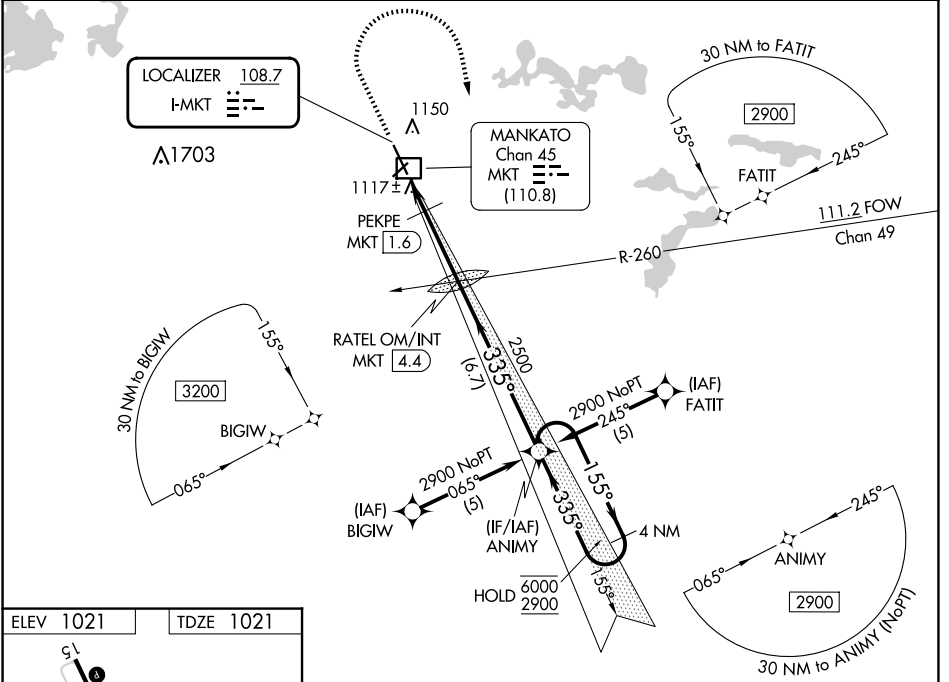
LOC I-MKT <b>108.7</b>	APP CRS <b>335°</b>	Rwy Idg TDZE Apt Elev	<b>6600</b> <b>1021</b> <b>1021</b>
---------------------------	------------------------	-----------------------------	---

# COPTER ILS Z or LOC Z RWY 33

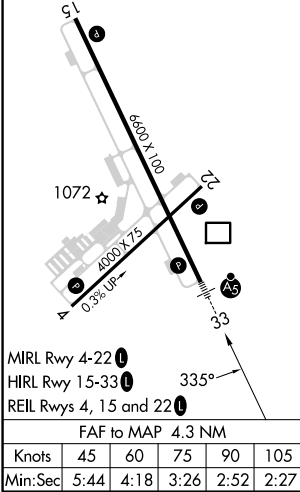
MANKATO RGNL (MKT)

RNP APCH - GPS.	MALSR	MISSED APPROACH: Climb to 1500 then climbing right turn to 2900 direct ANIMY and hold.
<p>▼ <b>NA</b> DME from MKT DME. DME use requires simultaneous reception of I-MKT and MKT DME. For inop ALS, increase H-ILS 33 visibility to 3/8 SM, H-LOC 33 to 1/2 SM, and PEKPE fix minimums H-LOC 33 to 1/2 SM. * DME from MKT DME.</p>		

AWOS-3PT <b>118.175</b>	MINNEAPOLIS CENTER <b>135.0 306.9</b>	UNICOM <b>122.725</b> (CTAF) <b>0</b>
----------------------------	--	--



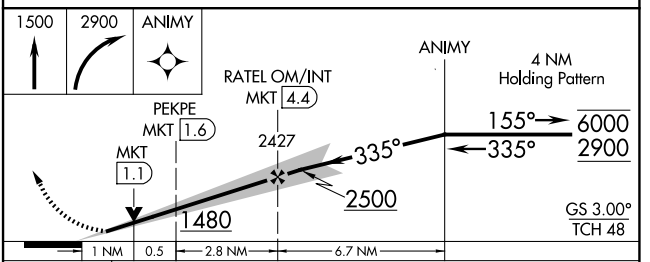
ELEV 1021	TDZE 1021
-----------	-----------



MIRL Rwy 4-22 **0**  
 HIRL Rwy 15-33 **0**  
 REIL Rwys 4, 15 and 22 **0**

FAF to MAP 4.3 NM

Knots	45	60	75	90	105
Min:Sec	5:44	4:18	3:26	2:52	2:27



CATEGORY	COPTER	
H-ILS 33	1221-1/4	200 (200-1/4)
H-LOC 33	1480-1/4	459 (500-1/4)
PEKPE FIX MINIMUMS*		
H-LOC 33	1380-1/4	359 (400-1/4)

# COPTER ILS Z or LOC Z RWY 33

NC-1, 16 APR 2026 to 14 MAY 2026

NC-1, 16 APR 2026 to 14 MAY 2026