

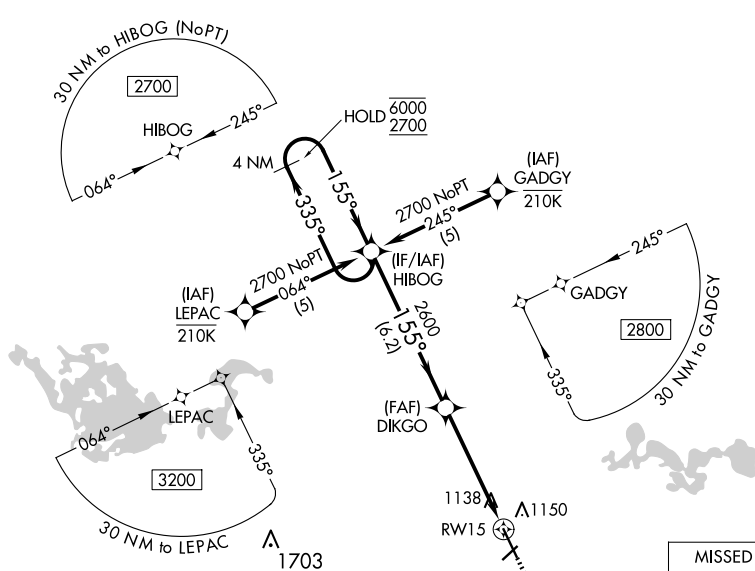
WAAS CH 45615 W15A	APP CRS 155°	Rwy ldg TDZE Apt Elev	6600 1020 1021
--	------------------------	-----------------------------	---

RNAV (GPS) RWY 15

MANKATO RGNL (MKT)

RNP APCH - GPS.	MISSED APPROACH: Climb to 2900 direct ANIMY and hold.
<p>▼ For uncompensated Baro-VNAV systems, LNAV/VNAV NA below -17°C or above 54°C. Rwy 15 helicopter visibility reduction below 1 SM NA.</p>	

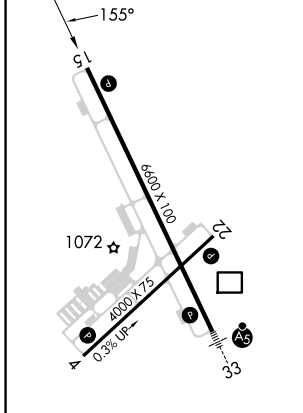
AWOS-3PT 118.175	MINNEAPOLIS CENTER 135.0 306.9	UNICOM 122.725 (CTAF) 0
----------------------------	--	-----------------------------------



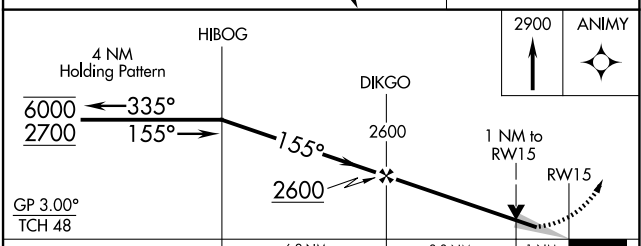
NC-1, 16 APR 2026 to 14 MAY 2026

NC-1, 16 APR 2026 to 14 MAY 2026

ELEV 1021	TDZE 1020
-----------	-----------



MIRL Rwy 4-22
HIRL Rwy 15-33
REIL Rws 4, 15 and 22



CATEGORY	A	B	C	D
LPV DA		1270-1	250 (300-1)	
LNAV/VNAV DA		1299-1	279 (300-1)	
LNAV MDA		1400-1	380 (400-1)	
CIRCLING	1460-1	1480-1	1600-1½	1600-2
	439 (500-1)	459 (500-1)	579 (600-1½)	579 (600-2)