

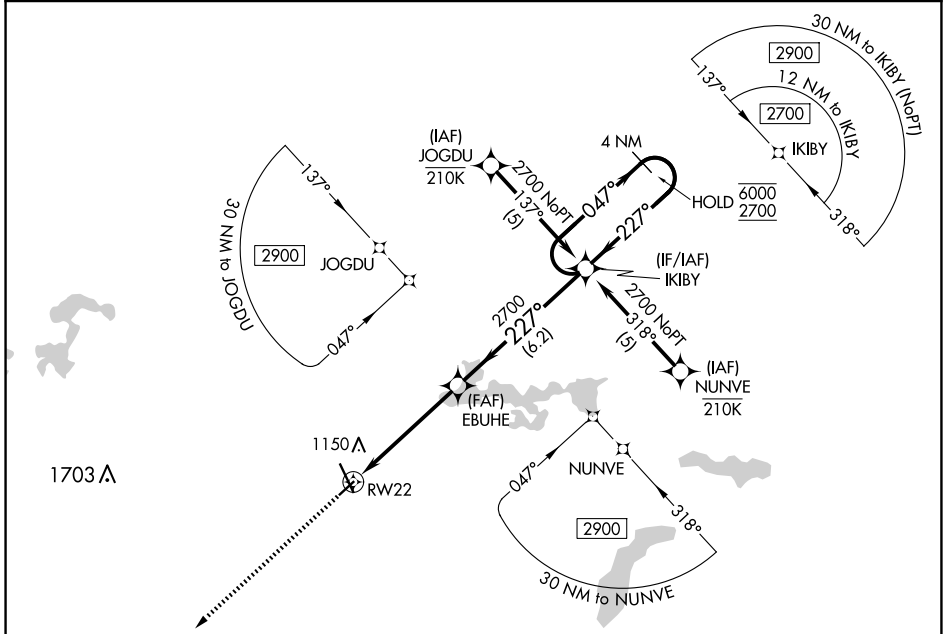
APP CRS	Rwy Idg	<b>4000</b>
<b>227°</b>	TDZE	<b>1021</b>
	Apt Elev	<b>1021</b>

# RNAV (GPS) RWY 22

MANKATO RGNL (MKT)

RNP APCH - GPS.	MISSED APPROACH: Climb to 2700 direct KABGE and hold.
<p>Rwy 22 helicopter visibility reduction below 1 SM NA.</p>	

AWOS-3PT <b>118.175</b>	MINNEAPOLIS CENTER <b>135.0 306.9</b>	UNICOM <b>122.725 (CTAF) 0</b>
----------------------------	--	-----------------------------------



NC-1, 16 APR 2026 to 14 MAY 2026

NC-1, 16 APR 2026 to 14 MAY 2026

ELEV 1021	TDZE 1021															
	<p>VGSI and descent angles not coincident (VGSI Angle 3.00/TCH 26).</p>															
	<p>EBUHE IKIBY 4 NM Holding Pattern</p>															
<p>1.6 NM to RW22</p> <p>1.6 NM 3.5 NM 6.2 NM</p>	<p>2700 2700 6000 2700</p> <p>047° 227° 227°</p>															
<table border="1"> <thead> <tr> <th>CATEGORY</th> <th>A</th> <th>B</th> <th>C</th> <th>D</th> </tr> </thead> <tbody> <tr> <td>RNAV MDA</td> <td>1560-1</td> <td>539 (600-1)</td> <td>1560-1½ 539 (600-1½)</td> <td>NA</td> </tr> <tr> <td>CIRCLING</td> <td>1560-1</td> <td>539 (600-1)</td> <td>1600-1½ 579 (600-1½)</td> <td>NA</td> </tr> </tbody> </table>	CATEGORY	A	B	C	D	RNAV MDA	1560-1	539 (600-1)	1560-1½ 539 (600-1½)	NA	CIRCLING	1560-1	539 (600-1)	1600-1½ 579 (600-1½)	NA	
CATEGORY	A	B	C	D												
RNAV MDA	1560-1	539 (600-1)	1560-1½ 539 (600-1½)	NA												
CIRCLING	1560-1	539 (600-1)	1600-1½ 579 (600-1½)	NA												

ELEV 1021	TDZE 1021															
	<p>VGSI and descent angles not coincident (VGSI Angle 3.00/TCH 26).</p>															
	<p>EBUHE IKIBY 4 NM Holding Pattern</p>															
<p>1.6 NM to RW22</p> <p>1.6 NM 3.5 NM 6.2 NM</p>	<p>2700 2700 6000 2700</p> <p>047° 227° 227°</p>															
<table border="1"> <thead> <tr> <th>CATEGORY</th> <th>A</th> <th>B</th> <th>C</th> <th>D</th> </tr> </thead> <tbody> <tr> <td>RNAV MDA</td> <td>1560-1</td> <td>539 (600-1)</td> <td>1560-1½ 539 (600-1½)</td> <td>NA</td> </tr> <tr> <td>CIRCLING</td> <td>1560-1</td> <td>539 (600-1)</td> <td>1600-1½ 579 (600-1½)</td> <td>NA</td> </tr> </tbody> </table>	CATEGORY	A	B	C	D	RNAV MDA	1560-1	539 (600-1)	1560-1½ 539 (600-1½)	NA	CIRCLING	1560-1	539 (600-1)	1600-1½ 579 (600-1½)	NA	
CATEGORY	A	B	C	D												
RNAV MDA	1560-1	539 (600-1)	1560-1½ 539 (600-1½)	NA												
CIRCLING	1560-1	539 (600-1)	1600-1½ 579 (600-1½)	NA												

MIRL Rwy 4-22

HIRL Rwy 15-33

REIL Rws 4, 15 and 22