

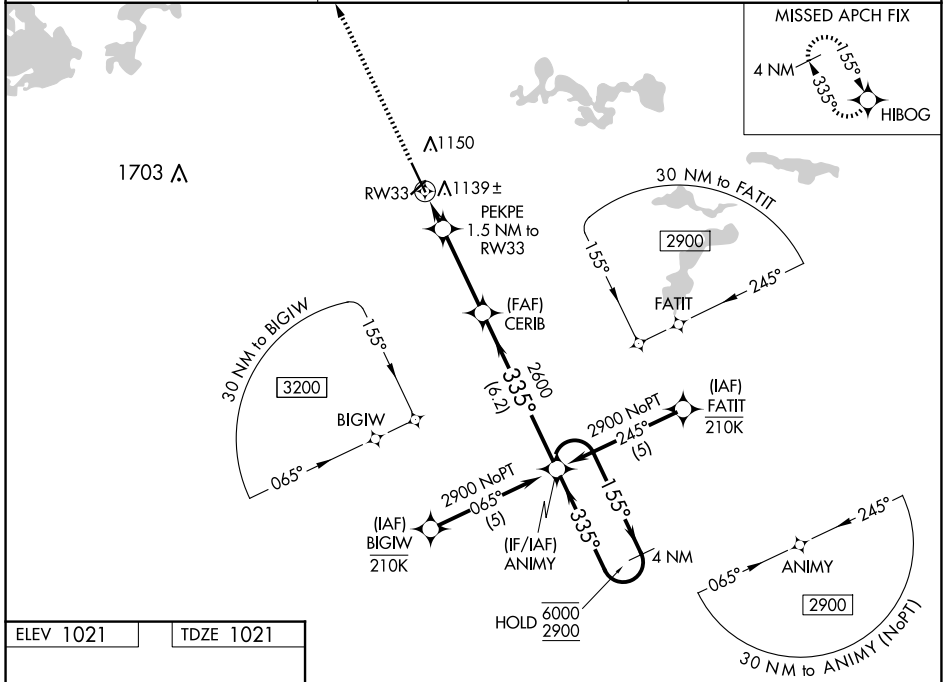
WAAS CH 86315 W33A	APP CRS 335°	Rwy ldg TDZE Apt Elev	6600 1021 1021
--	------------------------	-----------------------------	---

RNAV (GPS) RWY 33

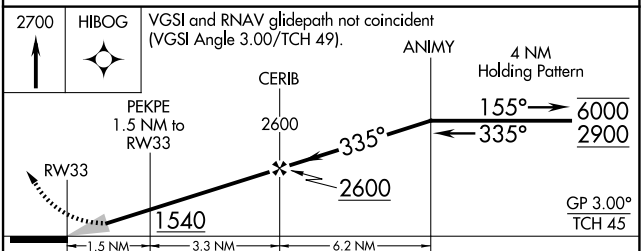
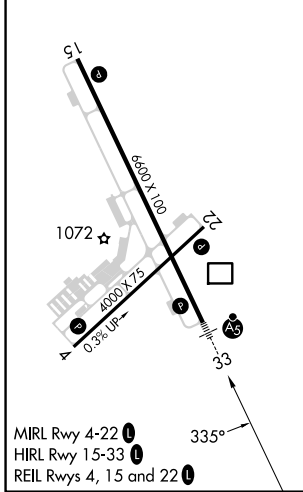
MANKATO RGNL (MKT)

RNP APCH - GPS.	MALSR 	MISSED APPROACH: Climb to 2700 direct HIBOG and hold.
<p>⚠ For uncompensated Baro-VNAV systems, LNAV/VNAV NA below -17°C or above 54°C. For inop ALS, increase LNAV/VNAV all Cats visibility to ¾ SM and LNAV Cats C and D visibility to 1 SM.</p>		

AWOS-3PT 118.175	MINNEAPOLIS CENTER 135.0 306.9	UNICOM 122.725 (CTAF) 📻
----------------------------	--	--



ELEV 1021	TDZE 1021
-----------	-----------



CATEGORY	A	B	C	D
LPV DA		1221-½	200 (200-½)	
LNAV/VNAV DA		1320-½	299 (300-½)	
LNAV MDA	1400-½	379 (400-½)	1400-⅝	379 (400-⅝)
CIRCLING	1460-1 439 (500-1)	1480-1 459 (500-1)	1600-1½ 579 (600-1½)	1600-2 579 (600-2)

NC-1, 16 APR 2026 to 14 MAY 2026

NC-1, 16 APR 2026 to 14 MAY 2026