

WAAS CH <b>49135</b> <b>W04A</b>	APP CRS <b>040°</b>	Rwy Ldg <b>5002</b> TDZE <b>181</b> Apt Elev <b>182</b>
--	------------------------	---

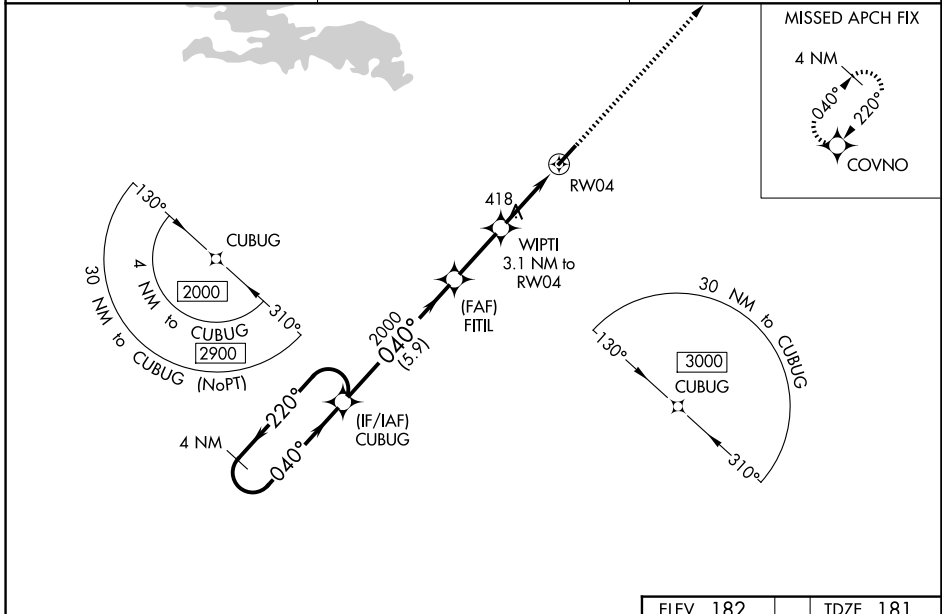
# RNAV (GPS) RWY 4

DEXTER B FLORENCE MEML FLD (ADF)

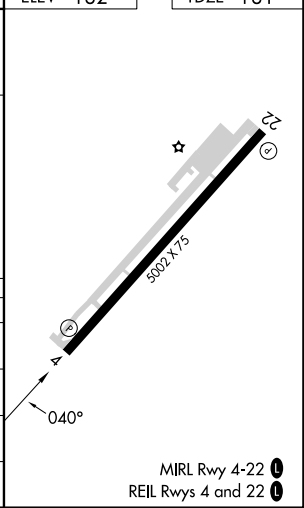
**▽** DME/DME RNP-0.3 NA. When local altimeter setting not received use Hot Springs altimeter setting and increase all DA 103 feet and MDA 120 feet and increase LPV all Cats visibility  $\frac{1}{8}$  mile and LNAV/VNAV all Cats visibility and Circling Cat C visibility  $\frac{1}{2}$  mile.  
**▲** NA For uncompensated Baro-VNAV systems, LNAV/VNAV NA below -1.5°C (5°F) or above 54°C (130°F). Baro-VNAV NA when using Hot Springs altimeter setting. Helicopter visibility reduction below  $\frac{3}{4}$  SM NA. Night landing: Rwy 22 NA.

MISSED APPROACH:  
Climb to 2100 direct COVNO and hold.

AWOS-3PT <b>118.175</b>	MEMPHIS CENTER <b>128.475 377.15</b>	UNICOM <b>122.7 (CTAF)</b>
----------------------------	---	-------------------------------



4 NM Holding Pattern		VGSI and RNAV glidepath not coincident (VGSI Angle 3.00/TCH 23).		2100	COVNO
CUBUG		FITIL	WIPTI	*LNAV only.	
2000 ← 220°		2000	3.1 NM to RWY 4		
040° →		2000			
GP 3.00°					
TCH 45					
		5.9 NM	2.5 NM	3.1 NM	
CATEGORY	A	B	C	D	
LPV DA	431-1 250 (300-1)			NA	
LNAV/VNAV DA	669-1 $\frac{5}{8}$ 488 (500-1 $\frac{3}{8}$ )			NA	
LNAV MDA	680-1	499 (500-1)	680-1 $\frac{3}{8}$ 499 (500-1 $\frac{3}{8}$ )	NA	
CIRCLING	760-1 578 (600-1)	800-1 618 (700-1)	1040-2 $\frac{1}{2}$ 858 (900-2 $\frac{1}{2}$ )	NA	



SC-1, 16 APR 2026 to 14 MAY 2026

SC-1, 16 APR 2026 to 14 MAY 2026

MIRL Rwy 4-22 **1**  
REIL Rwy 4 and 22 **1**