

# WYLSN EIGHT DEPARTURE (RNAV)

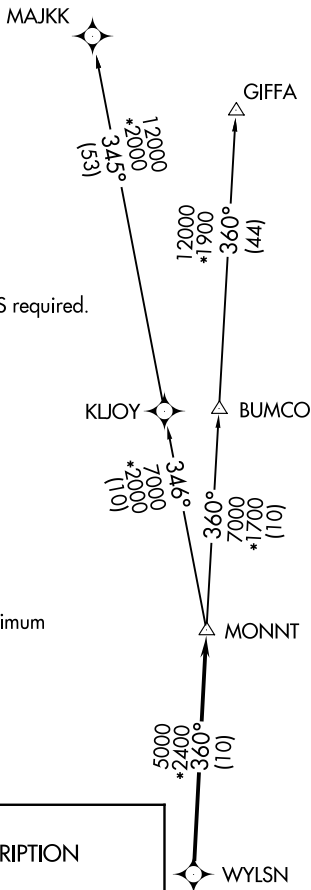
CTAF  
122.8  
HOUSTON DEP CON  
134.45 284.0

**TOP ALTITUDE:  
ASSIGNED BY ATC**

NOTE: RADAR required.  
NOTE: DME/DME/IRU or GPS required.  
NOTE: RNAV 1.

TAKEOFF MINIMUMS

Rwy 14, 32: Standard with minimum climb of 500' per NM to 540.



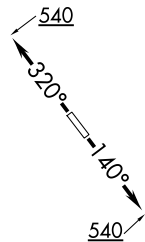
**DEPARTURE ROUTE DESCRIPTION**

TAKEOFF RUNWAY 14: Climb on heading 140° to 540 for RADAR vectors to WYLSN, thence. . . .

TAKEOFF RUNWAY 32: Climb on heading 320° to 540 for RADAR vectors to WYLSN, thence. . . .

. . . .on track 360° to MONNT, then on (transition). Maintain ATC assigned altitude. Expect filed altitude 10 minutes after departure.

GIFFA TRANSITION (WYLSN8.GIFFA)  
MAJJK TRANSITION (WYLSN8.MAJKK)



NOTE: Chart not to scale.

SC-5, 16 APR 2026 to 14 MAY 2026

SC-5, 16 APR 2026 to 14 MAY 2026

# WYLSN EIGHT DEPARTURE (RNAV)