

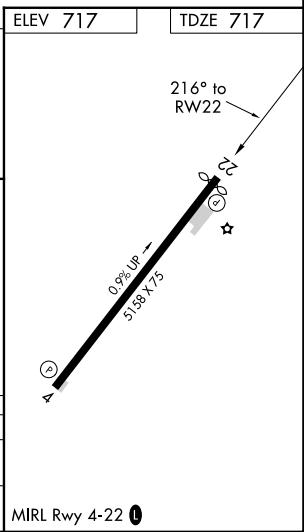
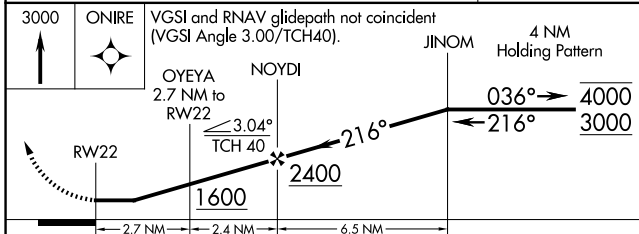
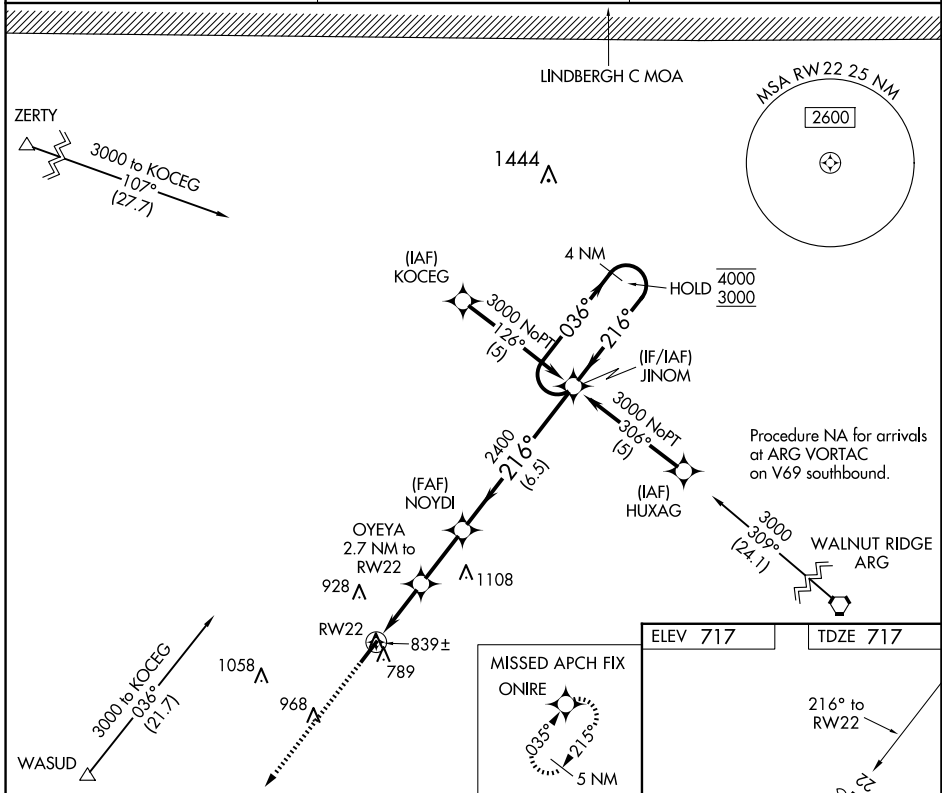
APP CRS	Rwy Idg	5004
216°	TDZE	717
	Apt Elev	717

RNAV (GPS) RWY 22

SHARP COUNTY RGNL (CVK)

RNP APCH.	<p>▼ Rwy 22 helicopter visibility reduction below 3/4 SM NA. Circling Rwy 4 NA at night. Use Walnut Ridge Rgnl altimeter setting; when not received, use Jonesboro Municipal altimeter setting and increase all MDAs 60 feet, increase LNAV Cat C visibility 1/8 SM and Circling Cat C visibility 1/4 SM.</p>	MISSED APPROACH: Climb to 3000 direct ONIRE and hold.
-----------	--	---

ARG AWOS-3PT 126.525	MEMPHIS CENTER 120.075 289.4	UNICOM 122.7 (CTAF) 0
--------------------------------	--	---------------------------------



CATEGORY	A	B	C	D
LNAV MDA	1360-1	643 (700-1)	1360-1 7/8 643 (700-1 7/8)	NA
CIRCLING	1400-1	683 (700-1)	1420-2 703 (800-2)	NA

SC-1, 16 APR 2026 to 14 MAY 2026

SC-1, 16 APR 2026 to 14 MAY 2026