

WAAS CH 82403 W14A	APP CRS 138°	Rwy Ldg TDZE Apt Elev	4650 1204 1204
--	------------------------	-----------------------------	---

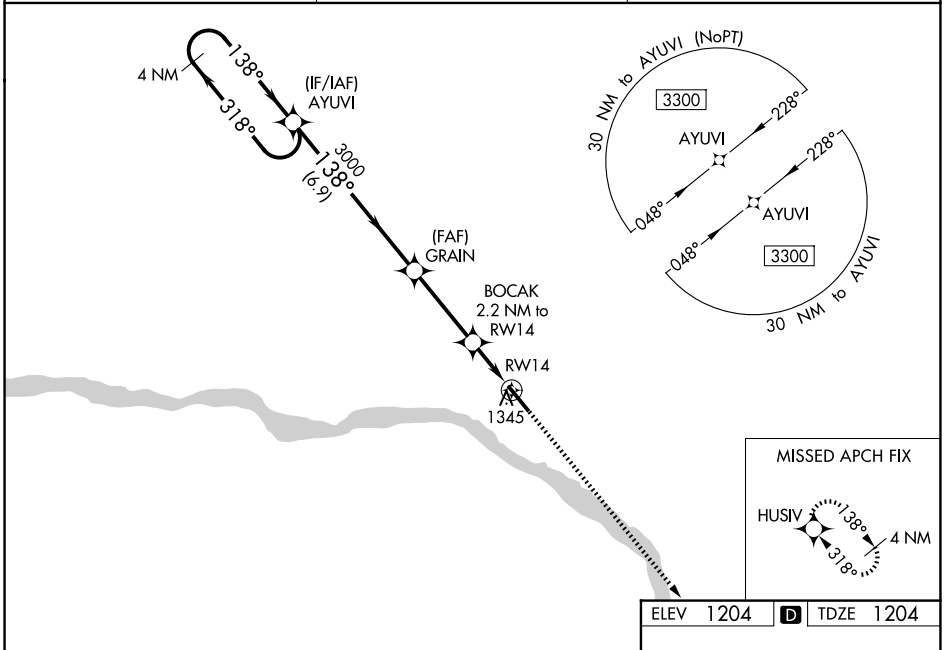
RNAV (GPS) RWY 14

FREMONT MUNI (F'ET)

⚠ For uncompensated Baro-VNAV systems, LNAV/VNAV NA below -17°C (2°F) or above 54°C (130°F). DME/DME RNP-0.3 NA. Helicopter visibility reduction below 1 SM NA. When local altimeter setting not received, use Blair altimeter setting and increase all DA/MDA 60 feet; increase LNAV/VNAV all Cats visibility 1/8 mile, and LNAV Cat C visibility 1/4 mile. Baro-VNAV and VDP NA when using Blair altimeter setting.

MISSED APPROACH:
Climb to 3800 direct HUSIV and hold.

AWOS-3 121.275	OMAHA APP CON 135.875 354.05	UNICOM 122.8 (CTAF)
--------------------------	--	-------------------------------



NC-2, 16 APR 2026 to 14 MAY 2026

NC-2, 16 APR 2026 to 14 MAY 2026

ELEV 1204		D TDZE 1204		
<p>4 NM Holding Pattern</p> <p>3300 ← 318°</p> <p>AYUVI</p> <p>3000</p> <p>GRAIN</p> <p>BOCAK 2.2 NM to RW14</p> <p>RW14</p> <p>GP 3.00° TCH 40</p> <p>6.9 NM</p> <p>3.3 NM</p> <p>1.1 NM</p> <p>1.1 NM</p> <p>3800 HUSIV</p> <p>*LNAV only</p> <p>*1940</p> <p>*1.1 NM to RW14</p>		<p>138°</p> <p>1260</p> <p>535 x 100</p> <p>REIL Rwy 14</p> <p>MIRL Rwy 14-32</p>		
CATEGORY	A	B	C	D
LPV DA	1454-1	250 (300-1)		NA
LNAV/VNAV DA	1496-1	292 (300-1)		NA
LNAV MDA	1600-1	396 (400-1)	1600-1/8 396 (400-1/8)	NA
CIRCLING	1760-1	556 (600-1)	2020-2 1/2 816 (900-2 1/2)	NA