

WAAS CH 86536 W09A	APP CRS 094°	Rwy Ldg TDZE 32 Apt Elev 34	5000
--	------------------------	---	-------------

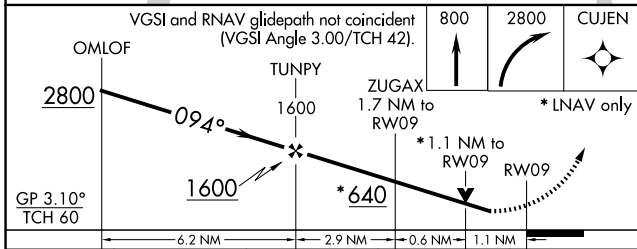
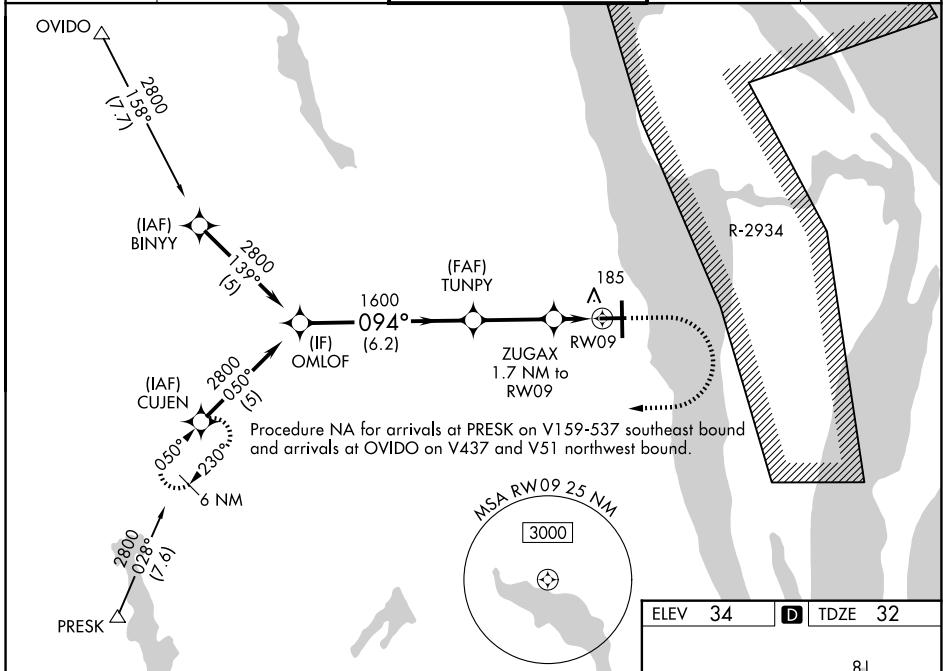
RNAV (GPS) RWY 9

SPACE COAST RGNL (TIX)

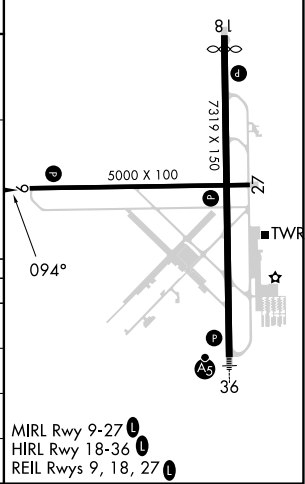
⚠ DME/DME RNP-0.3 NA. For uncompensated Baro-VNAV systems, LNAV/VNAV NA below -15°C (5°F) or above 46°C (115°F). When local altimeter setting not received, use Melbourne altimeter setting and increase all LPV DA to 352 feet, increase all LNAV/VNAV DA to 407 feet and all visibilities ¼ SM; increase all LNAV MDAs 60 feet and Cat C and D visibility ¼ SM. Rwy 9 helicopter visibility reduction below ¾ SM NA. VDP and Baro-VNAV NA when using Melbourne altimeter setting.

MISSED APPROACH: Climb to 800 then climbing right turn to 2800 direct CUJEN and hold.

ATIS 120.625	ORLANDO APP CON 134.95 281.425	SPACE COAST TOWER ★ 118.9 (CTAF) 0	GND CON 121.85	UNICOM 122.95
------------------------	--	--	--------------------------	-------------------------



ELEV 34	D TDZE 32
---------	------------------



CATEGORY	A	B	C	D
LPV DA		292-1	260 (300-1)	
LNAV/VNAV DA		347-1	315 (400-1)	
LNAV MDA	420-1 388 (400-1)		420-1 ⅓ 388 (400-1 ⅓)	
CIRCLING	640-1 606 (700-1)		640-1 ¾ 606 (700-1 ¾)	640-2 606 (700-2)

SE-3, 16 APR 2026 to 14 MAY 2026

SE-3, 16 APR 2026 to 14 MAY 2026