

WAAS CH 56612 W18B	APP CRS 181°	Rwy Ldg 6930 TDZE 32 Apt Elev 34
--	------------------------	---

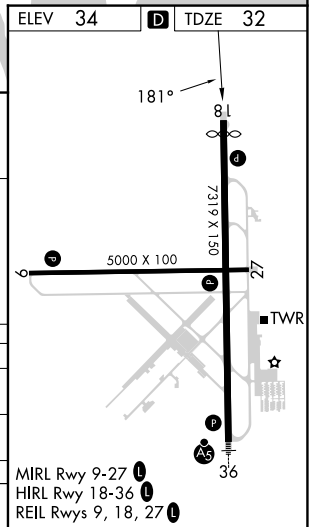
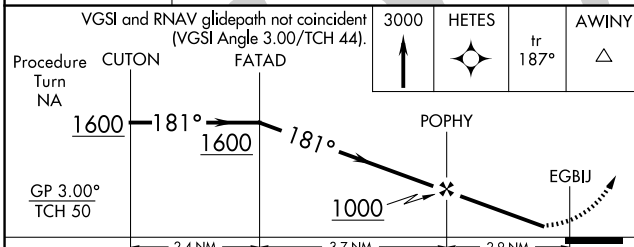
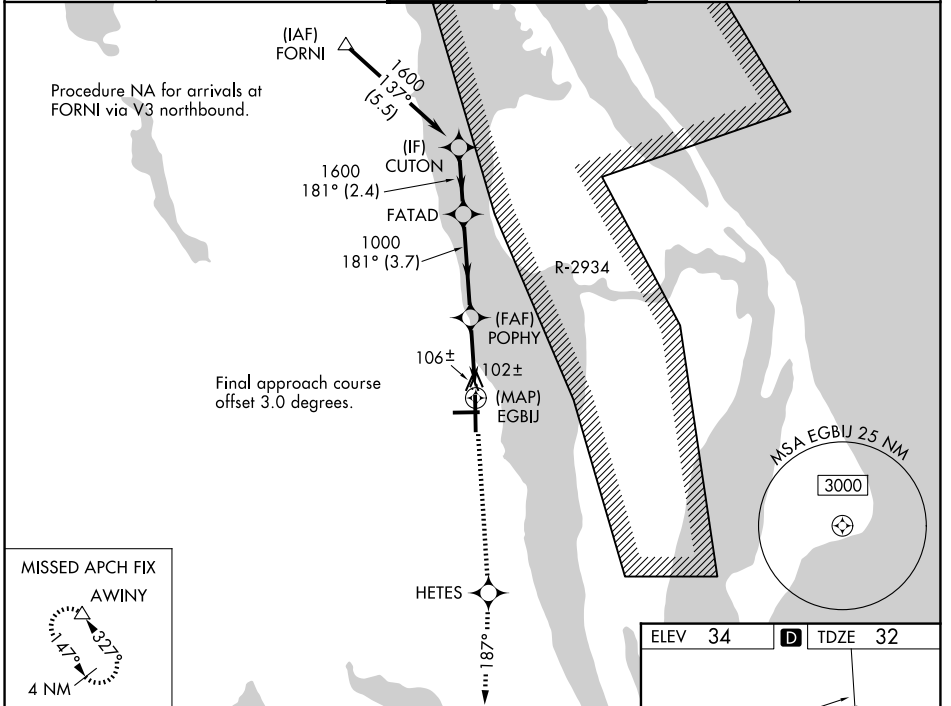
RNAV (GPS) Z RWY 18

SPACE COAST RGNL (TIX)

▼ Baro-VNAV NA when using Melbourne altimeter setting. For uncompensated Baro-VNAV systems, LNAV/VNAV NA below -15°C (5°F) or above 47°C (116°F). DME/DME RNP-0.3 NA. Visibility reduction by helicopters NA. When control tower closed, use Melbourne altimeter setting.

⚠ MISSED APPROACH: Climb to 3000 direct HETES and via track 187° to AWINY and hold.

ATIS 120.625	ORLANDO APP CON 134.95 281.425	SPACE COAST TOWER ★ 118.9 (CTAF) 0	GND CON 121.85	UNICOM 122.95
------------------------	--	--	--------------------------	-------------------------



CATEGORY	A	B	C	D
LPV DA		332-1	300 (300-1)	
LNAV/VNAV DA		377-1¼	345 (400-1¼)	
MELBOURNE ALTIMETER SETTING MINIMUMS				
LNAV/VNAV DA		437-1½	405 (500-1½)	

SE-3, 16 APR 2026 to 14 MAY 2026

SE-3, 16 APR 2026 to 14 MAY 2026