

APP CRS	Rwy Ldg	4100
150°	TDZE	1231
	Apt Elev	1231

RNAV (GPS) RWY 15

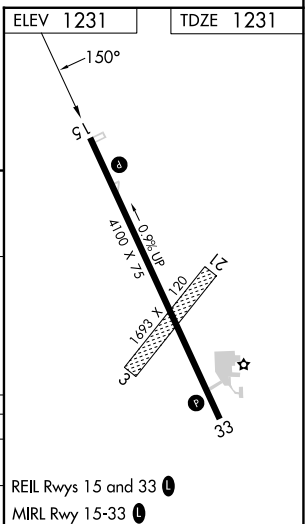
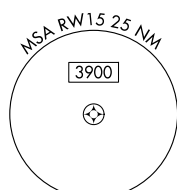
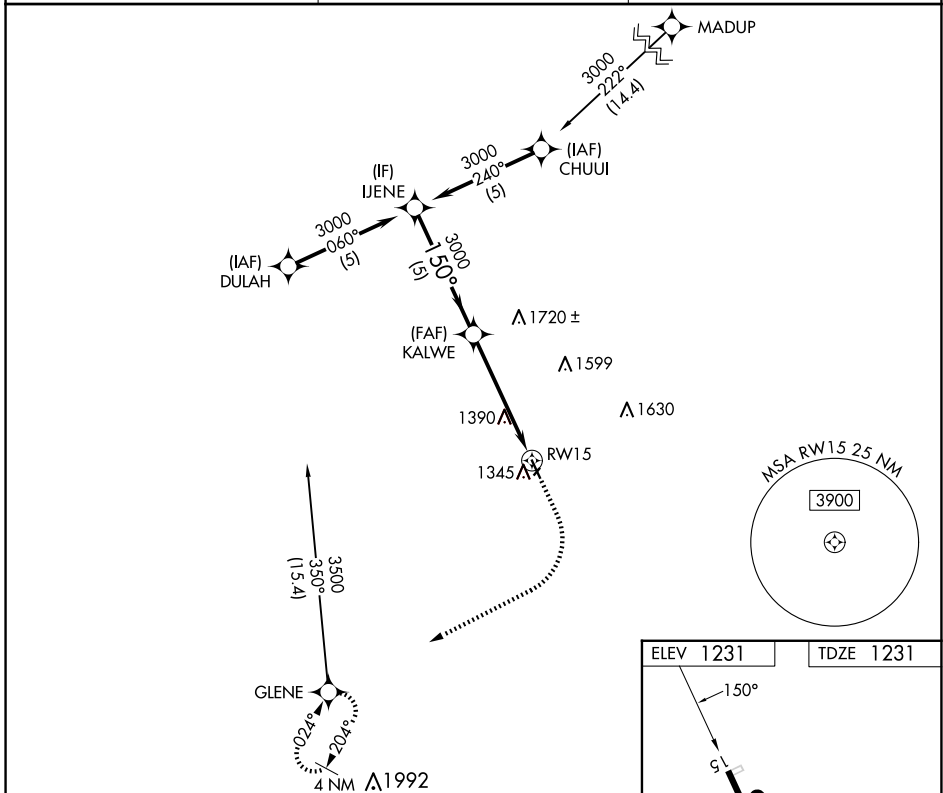
HARLAN MUNI (HNR)

RNP APCH - GPS.

⚠ Circling NA to Rwys 3 and 21. Procedure NA at night.
⚠ NA Rwy 15 helicopter visibility reduction below 1 SM NA.

MISSED APPROACH: Climb to 2000, then climbing right turn to 3600 direct GLENE and hold.

AWOS-3 118.325	OMAHA APP CON 124.5 263.0	UNICOM 122.8 (CTAF) 0
--------------------------	-------------------------------------	---------------------------------



VGSI and descent angles not coincident (VGSI Angle 3.00/TCH 40).

2000	3600	GLENE
↑	↷	✦

IJENE 3000 → 150° → 3000 → KALWE → 3.27° TCH 35 → RWY 15

CATEGORY	A	B	C	D
LNAV MDA	1860-1	629 (700-1)		NA
CIRCLING	1860-1	629 (700-1)		NA

NC-3, 16 APR 2026 to 14 MAY 2026

NC-3, 16 APR 2026 to 14 MAY 2026