

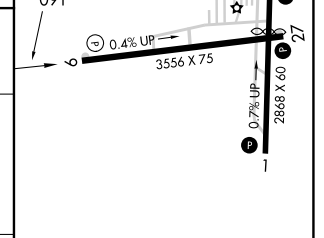
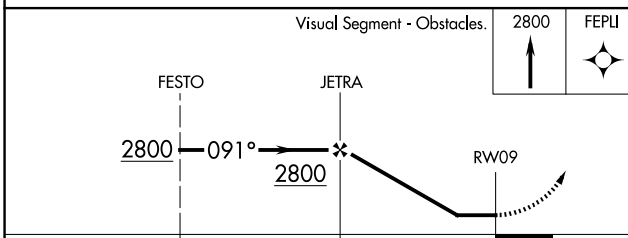
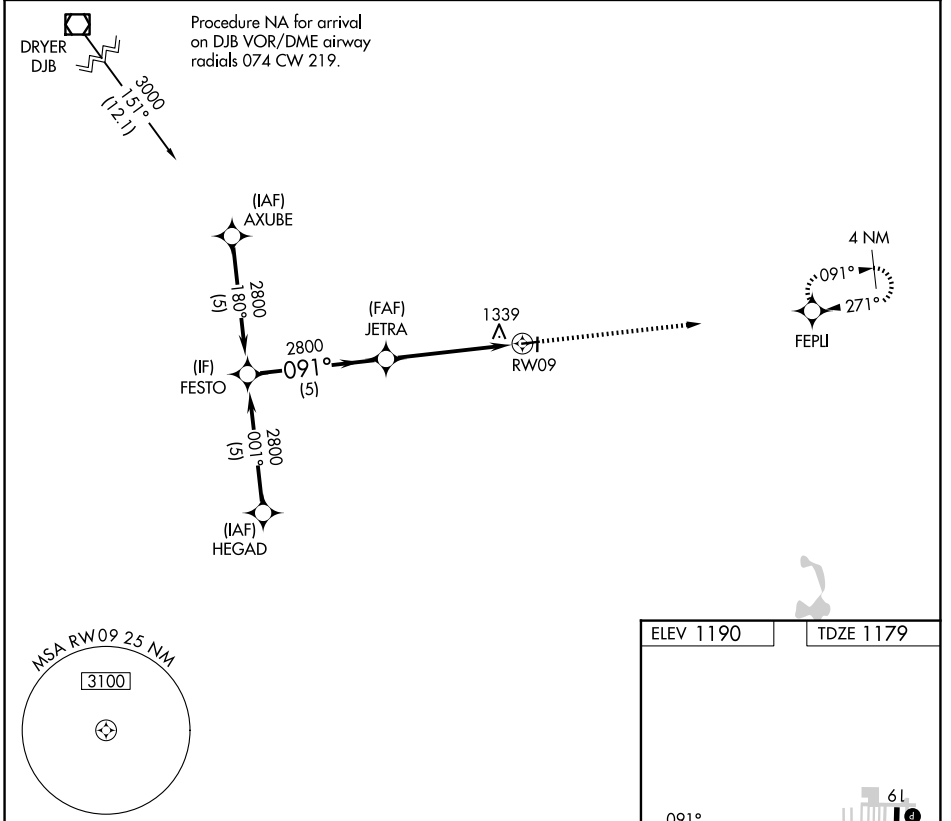
APP CRS 091°	Rwy Ldg TDZE Apt Elev	3556 1179 1190
------------------------	-----------------------------	---

RNAV (GPS) RWY 9

MEDINA MUNI (1G5)

RNP APCH.	<p>Procedure NA at night. Rwy 9 helicopter visibility reduction below 1 SM NA. Use Cleveland-Hopkins Intl altimeter setting.</p>	MISSED APPROACH: Climb to 2800 direct FEPLI and hold.
-----------	--	---

CLE ASOS 127.85	CLEVELAND APP CON 125.35 346.325	UNICOM 123.0 (CTAF) 0
---------------------------	--	---------------------------------



CATEGORY	A	B	C	D
LNAV MDA	1700-1	521 (600-1)	1700-1½ 521 (600-1½)	NA

REIL Rwy 27 0
MIRL Rwy 9-27 and 1-19 0

EC-2, 16 APR 2026 to 14 MAY 2026

EC-2, 16 APR 2026 to 14 MAY 2026