

VOR/DME ACO 114.4 Chan 91	APP CRS 278°	Rwy Idg 3556 TDZE 1183 Apt Elev 1190
---	------------------------	---

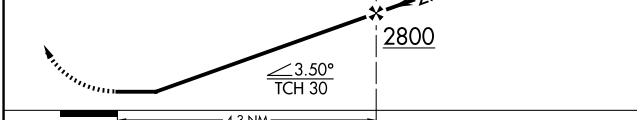
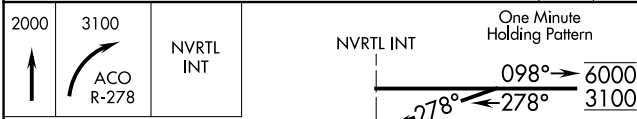
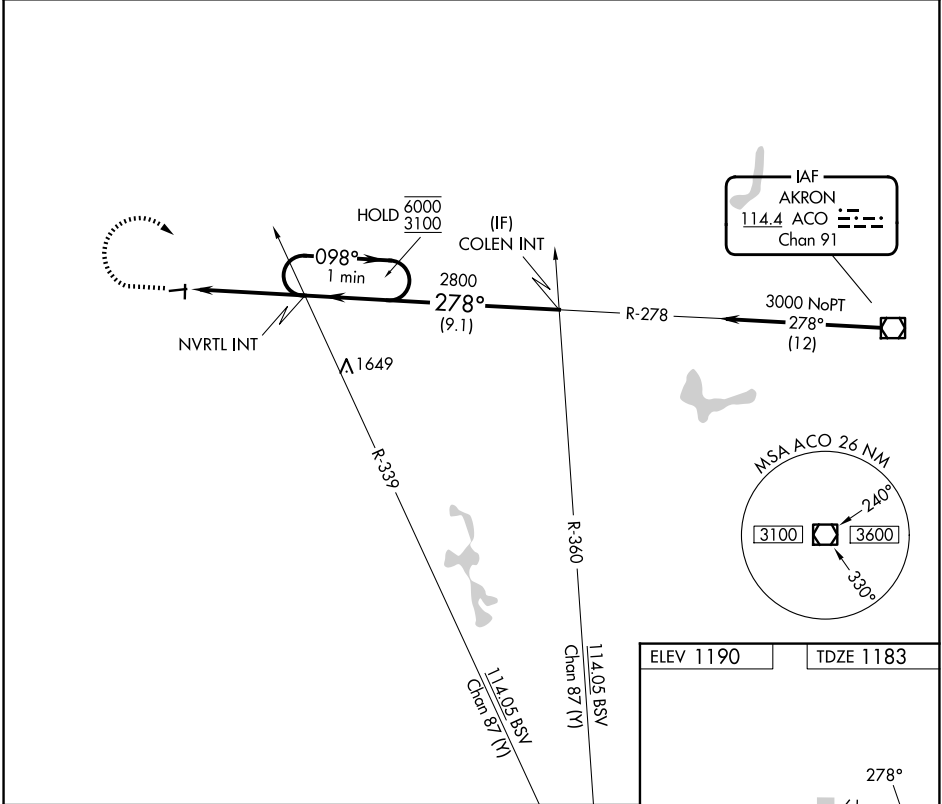
VOR RWY 27

MEDINA MUNI (1G5)

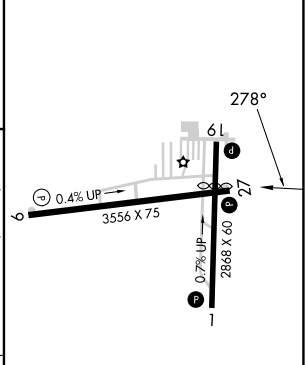
⚠ Rwy 27 helicopter visibility reduction below $\frac{3}{4}$ SM NA.
⚠ NA Circling Rwy 1, 9, 19 NA at night. Use Cleveland-Hopkins Intl altimeter setting.

MISSED APPROACH: Climb to 2000 then climbing right turn to 3100 on ACO VOR/DME R-278 to NVRTL INT and hold, continue climb-in-hold to 3100.

CLE ASOS 127.85	CLEVELAND APP CON 125.35 346.325	UNICOM 123.0 (CTAF) 0
---------------------------	--	---------------------------------



ELEV 1190	TDZE 1183
-----------	-----------



CATEGORY	A	B	C	D
S-27	1780-1	597 (600-1)	1780-1 $\frac{3}{4}$ 597 (600-1 $\frac{3}{4}$)	NA
CIRCLING	1780-1	590 (600-1)	1780-1 $\frac{3}{4}$ 590 (600-1 $\frac{3}{4}$)	NA

REIL Rwy 27 **0**
MIRL Rwy 9-27, 1-19 **0**

FAF to MAP 4.3 NM

Knots	60	90	120	150	180
Min:Sec	4:18	2:52	2:09	1:43	1:26

EC-2, 16 APR 2026 to 14 MAY 2026

EC-2, 16 APR 2026 to 14 MAY 2026