

WAAS CH 65901 W04A	APP CRS 037°	Rwy Ldg TDZE 863 Apt Elev 869	6497
--	------------------------	---	-------------

RNAV (GPS) RWY 4

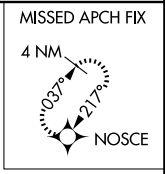
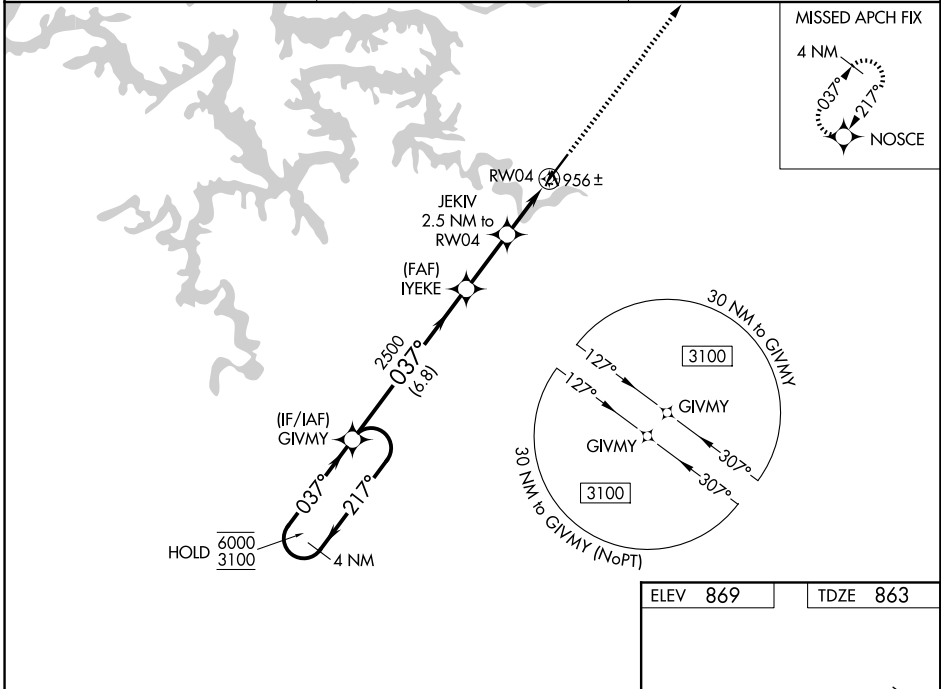
LEE C FINE MEML (AIZ)

RNP APCH - GPS.

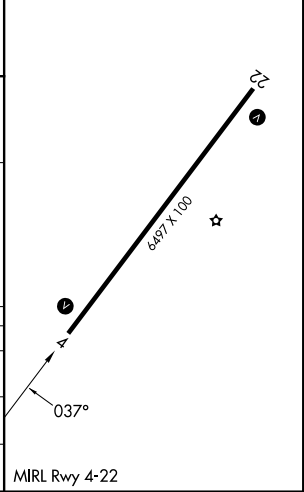
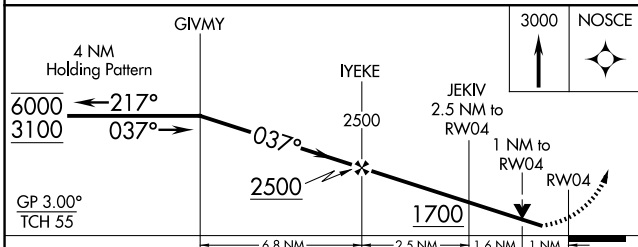
⚠ Rwy 4 helicopter visibility reduction below 1 SM NA. For uncompensated Baro-VNAV systems, LNAV/VNAV NA below -16°C or above 54°C. Baro-VNAV and VDP NA when using OZS altimeter setting. When local altimeter setting not received, use OZS altimeter setting and increase LPV DA to 1204 feet. Increase LNAV/VNAV DA to 1163 feet and all visibilities ½ SM. Increase all MDAs 60 feet and LNAV visibility Cat C ½ SM.

MISSED APPROACH: Climb to 3000 direct NOSCE and hold.

AWOS-3PT 135.325	MIZU APP CON 124.1 353.925	UNICOM 122.8 (CTAF) 0
----------------------------	--------------------------------------	---------------------------------



ELEV 869	TDZE 863
-----------------	-----------------



CATEGORY	A	B	C	D
LPV DA	1155-1	292 (300-1)		NA
LNAV/VNAV DA	1114-1	251 (300-1)		NA
LNAV MDA	1220-1	357 (400-1)		NA

NC-3, 16 APR 2026 to 14 MAY 2026

NC-3, 16 APR 2026 to 14 MAY 2026