

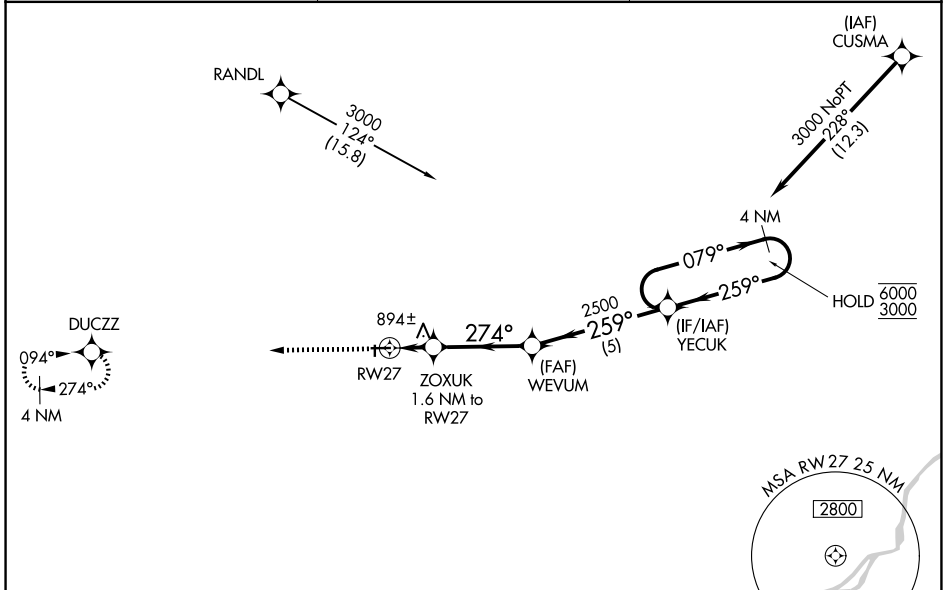
WAAS CH <b>66028</b> <b>W27A</b>	APP CRS <b>274°</b>	Rwy Ldg TDZE <b>777</b> Apt Elev <b>781</b>
--	------------------------	---

# RNAV (GPS) RWY 27

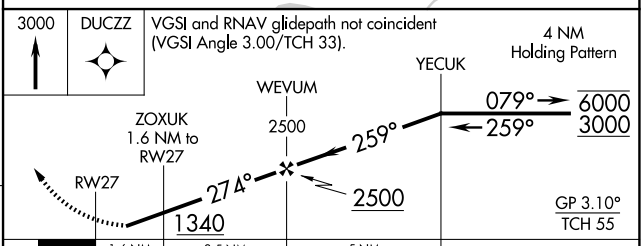
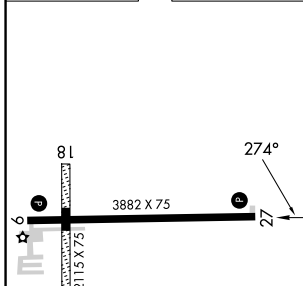
FULTON COUNTY (USE)

RNP APCH - GPS.	<p><b>⚠</b> Rwy 27 helicopter visibility reduction below <math>\frac{3}{4}</math> SM NA.  <b>⚠</b> Circling NA to Rwy 18 and 36.                  For uncompensated Baro-VNAV systems, LNAV/VNAV NA below -16°C or above 54°C.                  Circling Rwy 9 NA at night.</p>	MISSED APPROACH: Climb to 3000 direct DUCZZ and hold.
-----------------	---	--

AWOS-3P <b>127.375</b>	TOLEDO APP CON <b>134.35 317.55</b>	UNICOM <b>123.0 (CTAF)</b>
---------------------------	--	-------------------------------



ELEV 781	TDZE 777
----------	----------



CATEGORY	A	B	C	D
LPV DA		1092-1	315 (400-1)	
LNAV/VNAV DA		1095-1	318 (400-1)	
LNAV MDA	1180-1	403 (400-1)	1180-1½	403 (400-1½)
CIRCLING	1280-1	499 (500-1)	1480-2 699 (700-2)	1480-2¼ 699 (700-2¼)

REIL Rwy 9 and 27 <b>Ⓛ</b>
MIRL Rwy 9-27 <b>Ⓛ</b>

EC-2, 16 APR 2026 to 14 MAY 2026

EC-2, 16 APR 2026 to 14 MAY 2026