

WAAS CH <b>99624</b> <b>W05A</b>	APP CRS <b>047°</b>	Rwy Idg TDZE Apt Elev	<b>5501</b> <b>132</b> <b>133</b>
--	------------------------	-----------------------------	---

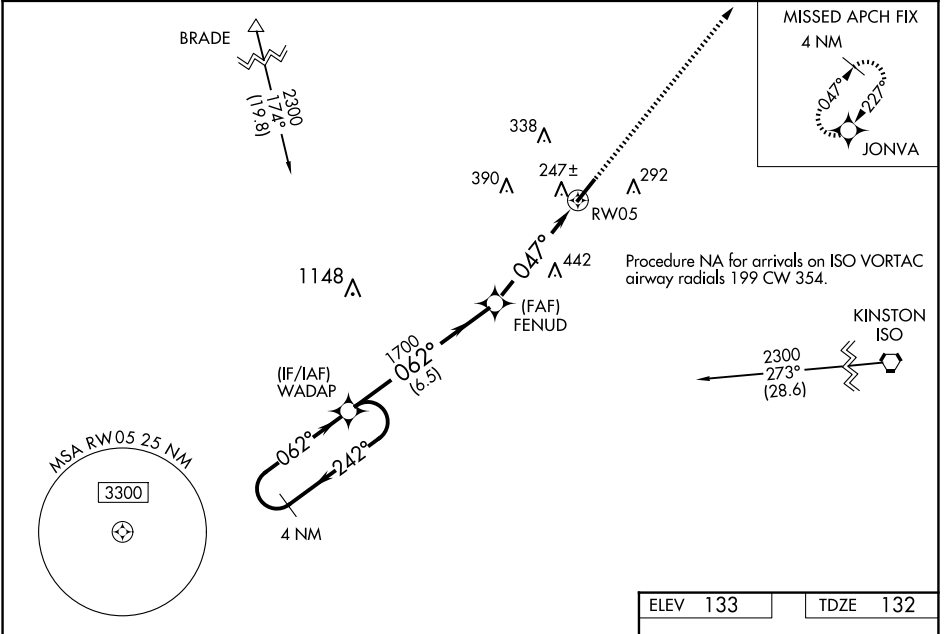
# RNAV (GPS) RWY 5

WAYNE EXEC JETPORT (GWW)

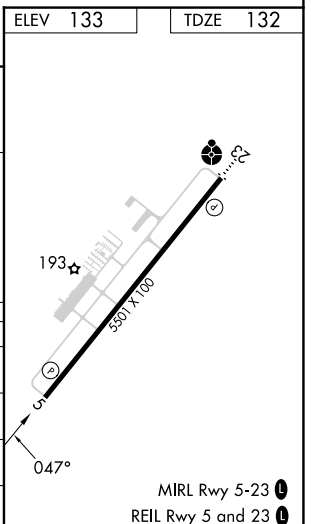
**⚠** Baro-VNAV NA when using Smithfield altimeter setting. For uncompensated Baro-VNAV systems, LNAV/VNAV NA below -15°C (5°F) or above 43°C (109°F). DME/DME RNP-0.3 NA.  
**⚠** Helicopter visibility reduction below ¼ SM NA. VDP NA with Smithfield altimeter setting.  
 When local altimeter setting not received, use Smithfield altimeter setting and increase LPV DA to 490 feet, LNAV/VNAV DA to 462 and all MDA 60 feet, increase LPV and LNAV/VNAV all Cats visibility ½ SM, and Circling visibility Cat C/D ¼ SM.

**MISSED APPROACH:**  
Climb to 2000 direct JONVA and hold.

AWOS-3P <b>118.975</b>	SEYMOUR JOHNSON APP CON * <b>121.175 290.9</b>	UNICOM <b>122.975 (CTAF) 0</b>
---------------------------	---	-----------------------------------



4 NM Holding Pattern		VGSi and RNAV glidepath not coincident (VGSi Angle 3.00/TCH 40).		2000	JONVA
WADAP		FENUD		*LNAV only	
2300 ← 242° / 062° →		1700		*1.3 NM to RW05	
GP 3.00° TCH 60		1700		RW05	
6.5 NM		3.5 NM		1.3 NM	
CATEGORY	A	B	C	D	
LPV DA		436-1	304 (400-1)		
LNAV/VNAV DA		408-7/8	276 (300-7/8)		
LNAV MDA	580-1	448 (500-1)	580-13/8	448 (500-13/8)	
CIRCLING	580-1 447 (500-1)	640-1 507 (600-1)	760-13/4 627 (700-13/4)	760-2 627 (700-2)	



SE-2, 16 APR 2026 to 14 MAY 2026

SE-2, 16 APR 2026 to 14 MAY 2026