

WAAS CH <b>87013</b> <b>W18A</b>	APP CRS <b>177°</b>	Rwy ldg TDZE <b>213</b> Apt Elev <b>213</b>	<b>5500</b>
--	------------------------	---	-------------

# RNAV (GPS) RWY 18

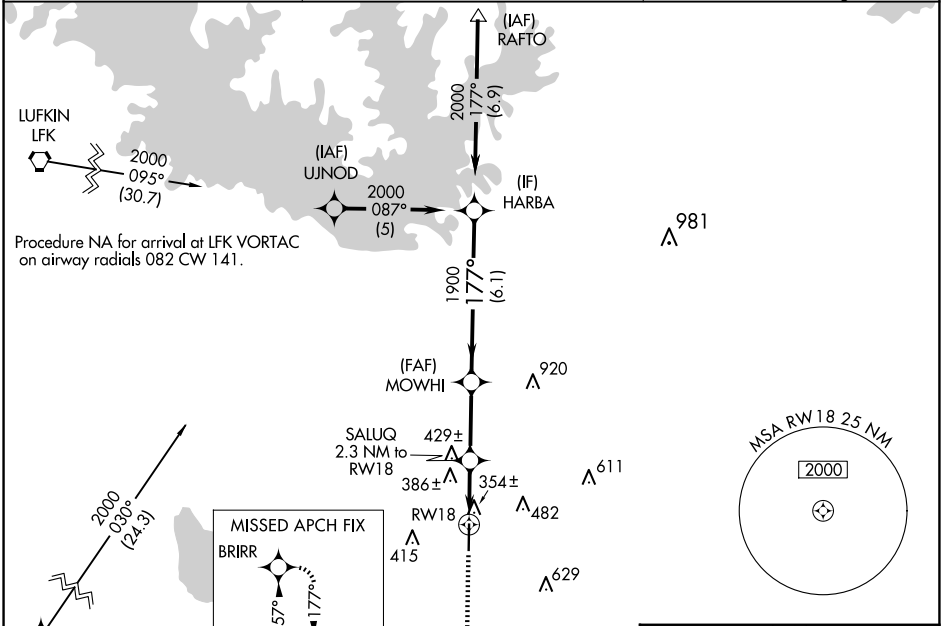
JASPER COUNTY/BELL FLD (JAS)

RNP APCH-GPS.

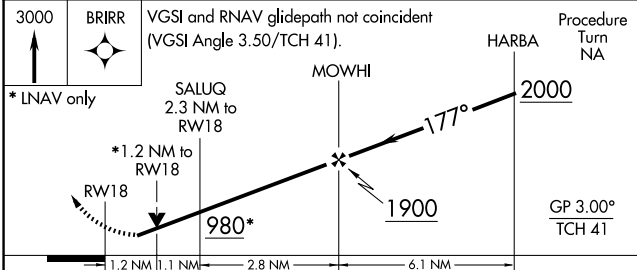
▼ Baro-VNAV NA when using De Ridder altimeter setting. For uncompensated Baro-VNAV systems, LNAV/VNAV NA below -15°C or above 54°C. Rwy 18 helicopter visibility reduction below ¼ SM NA. VDP NA when using De Ridder altimeter setting. When local altimeter setting not received, use De Ridder altimeter setting and increase LPV DA to 654 feet and all visibilities ¾ SM. Increase LNAV/VNAV DA to 817 feet and all visibilities ¾ SM. Increase all MDAs 100 feet and LNAV visibility Cat C ¾ SM, and Circling visibility Cat C ½ SM.

MISSED APPROACH:  
Climb to 3000  
direct BRIRR  
and hold.

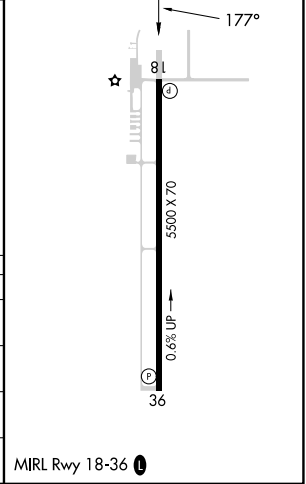
AWOS-3 <b>118.375</b>	HOUSTON CENTER <b>126.95 363.05</b>	UNICOM <b>122.8 (CTAF)</b>
--------------------------	--	-------------------------------



3000	BRIRR	VGSI and RNAV glidepath not coincident (VGSI Angle 3.50/TCH 41).	HARBA	Procedure Turn NA
------	-------	--	-------	-------------------



ELEV 213	TDZE 213
----------	----------



CATEGORY	A	B	C	D
LPV DA	567-1	354 (400-1)		NA
LNAV/VNAV DA	730-1 3/8	517 (600-1 3/8)		NA
LNAV MDA	700-1	487 (500-1)	700-1 3/8 487 (500-1 3/8)	NA
CIRCLING	740-1	527 (600-1)	800-1 1/2 587 (600-1 1/2)	NA

MIRL Rwy 18-36

SC-5, 16 APR 2026 to 14 MAY 2026

SC-5, 16 APR 2026 to 14 MAY 2026