

WAAS CH 42813 W36A	APP CRS 357°	Rwy Idg TDZE 192 Apt Elev 213	5500
--	------------------------	---	-------------

RNAV (GPS) RWY 36

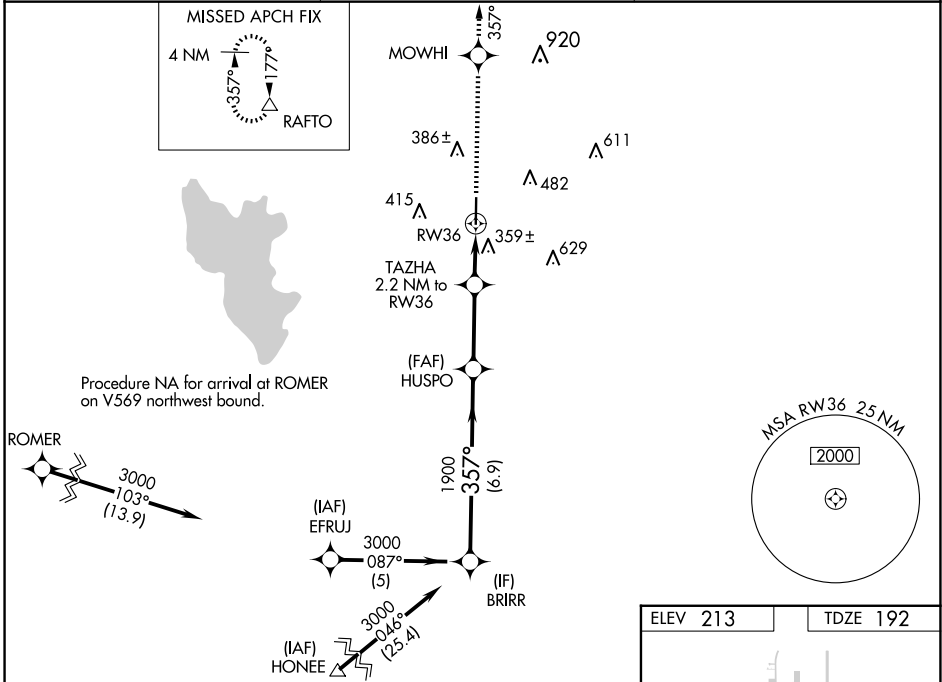
JASPER COUNTY/BELL FLD (JAS)

RNP APCH-GPS

▼ Baro-VNAV NA when using De Ridder altimeter setting. For uncompensated Baro-VNAV systems, LNAV/VNAV NA below -15°C or above 54°C. Rwy 36 helicopter visibility reduction below ¼ SM NA. VDP NA when using De Ridder altimeter setting. When local altimeter setting not received, use De Ridder altimeter setting and increase LPV DA to 681 feet and all visibilities ¼ SM, increase LNAV/VNAV DA to 762 feet and all visibilities ¼ SM, increase all MDAs 100 feet and LNAV visibility Cat C ½ SM, and Circling visibility Cat C ¼ SM.

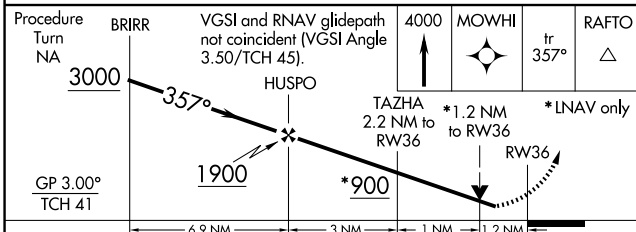
MISSED APPROACH:
Climb to 4000 direct MOWHI and via track 357° to RAFTO and hold.

AWOS-3 118.375	HOUSTON CENTER 126.95 363.05	UNICOM 122.8 (CTAF) ①
--------------------------	--	---------------------------------

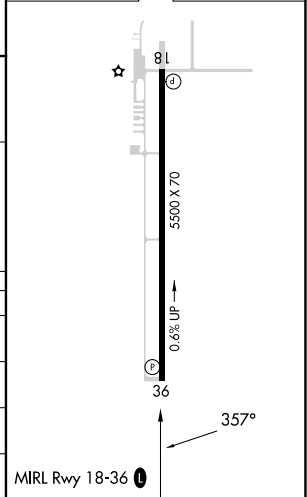


Procedure NA for arrival at ROMER on V569 northwest bound.

ELEV 213	TDZE 192
----------	----------



CATEGORY	A	B	C	D
LPV DA	594-1½ 402 (400-1½)			NA
LNAV/VNAV DA	675-1¾ 483 (500-1¾)			NA
LNAV MDA	680-1	488 (500-1)	680-1¾ 488 (500-1¾)	NA
CIRCLING	740-1	527 (600-1)	800-1½ 587 (600-1½)	NA



SC-5, 16 APR 2026 to 14 MAY 2026

SC-5, 16 APR 2026 to 14 MAY 2026