

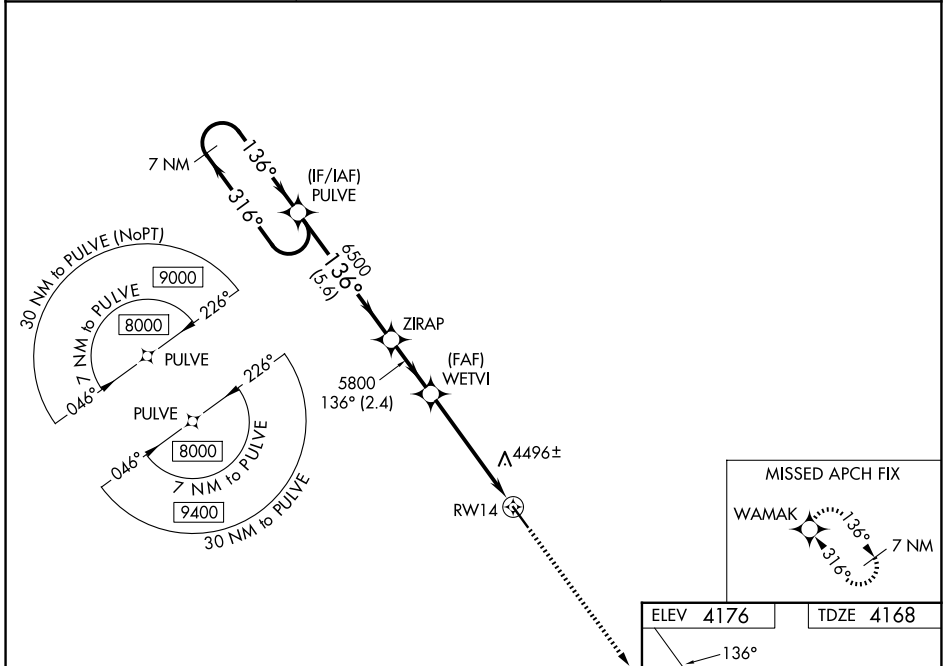
WAAS CH <b>56525</b> <b>W14A</b>	APP CRS <b>136°</b>	Rwy Ldg TDZE Apt Elev	<b>5310</b> <b>4168</b> <b>4176</b>
--	------------------------	-----------------------------	---

# RNAV (GPS) RWY 14

MONDELL FLD (ECS)

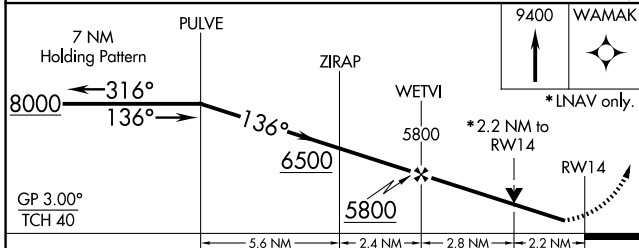
RNP APCH.	<p><b>▽</b> When Newcastle altimeter setting not received, procedure NA.  <b>⚠</b> For uncompensated Baro-VNAV systems, LNAV/VNAV NA below -23°C (-9°F) or above 53°C (128°F). Rwy 14 helicopter visibility reduction below 3/4 SM NA. Circling NA northeast of Rwy 14-32.</p>	<p>MISSED APPROACH: Climb to 9400 direct WAMAK and hold, continue climb-in-hold to 9400.</p>

AWOS-3PT <b>118.0</b>	DENVER CENTER <b>127.95 338.2</b>	UNICOM <b>122.8 (CTAF) 0</b>
--------------------------	--------------------------------------	---------------------------------



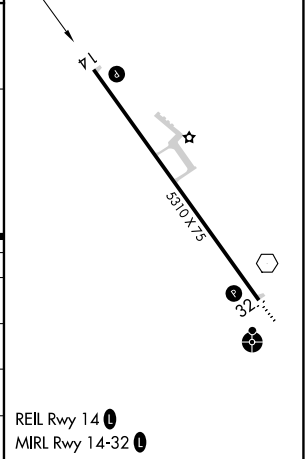
NW-1, 16 APR 2026 to 14 MAY 2026

NW-1, 16 APR 2026 to 14 MAY 2026



ELEV 4176	TDZE 4168
-----------	-----------

CATEGORY	A	B	C	D
LPV DA	4418-1 250 (300-1)			
LNAV/VNAV DA	4846-2½ 678 (700-2½)			
LNAV MDA	4920-1 752 (800-1)	4920-1¼ 752 (800-1¼)	4920-2 752 (800-2)	
CIRCLING	4920-1 744 (800-1)	4920-1¼ 744 (800-1¼)	4920-2¼ 744 (800-2¼)	5000-2¾ 824 (900-2¾)



REIL Rwy 14 0  
MIRL Rwy 14-32 0