

VORTAC LFT	APP CRS	Rwy Idg	<b>5210</b>
<b>109.8</b>	<b>343°</b>	TDZE	<b>74</b>
Chan <b>35</b>		Apt Elev	<b>75</b>

# VOR RWY 36

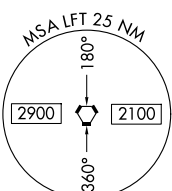
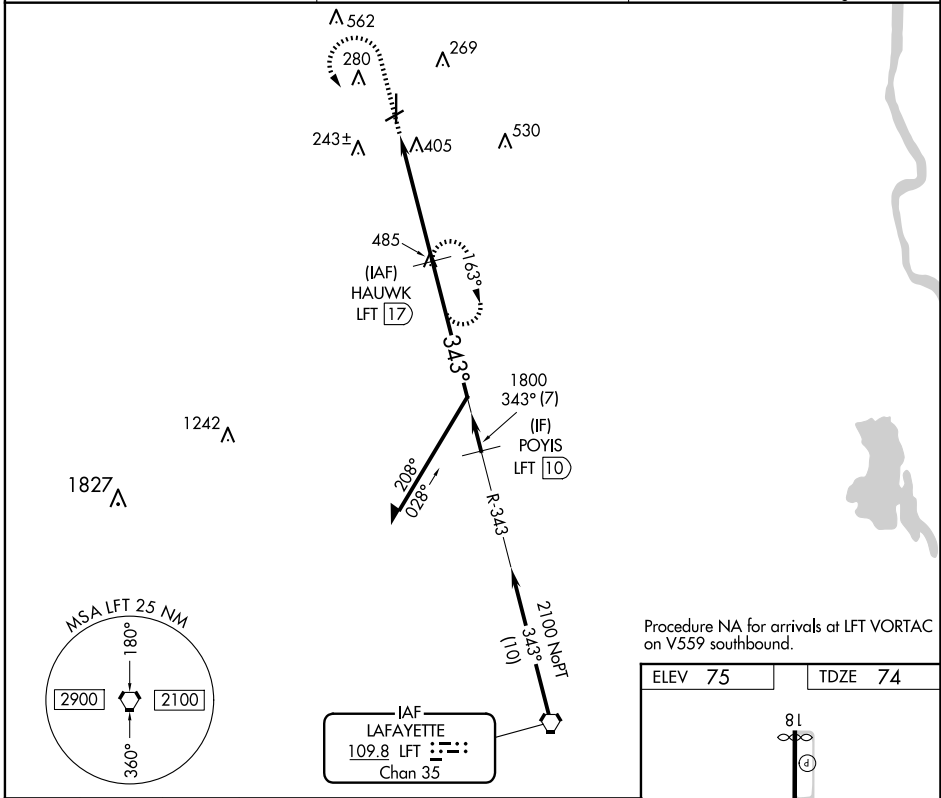
ST LANDRY PARISH (OPL)

DME required.

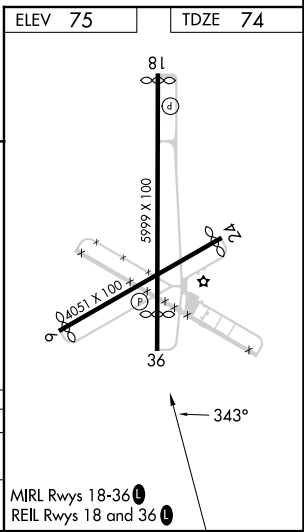
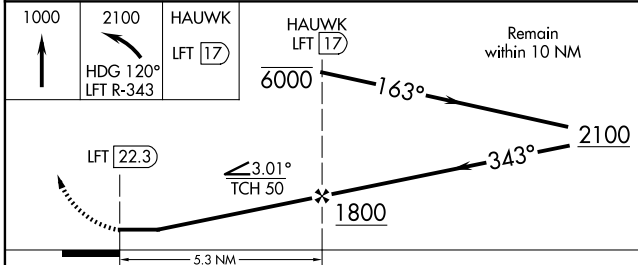
▼ Circling Rwy 6, 24 NA at night.  
 ▲ Rwy 36 helicopter visibility reduction below ¾ SM NA.

MISSED APPROACH: Climb to 1000 then climbing left turn to 2100 on heading 120° and LFT R-343 to HAUWK/17 DME and hold.

AWOS-3PT <b>118.775</b>	LAFAYETTE APP CON ★ <b>128.7 268.7</b>	UNICOM <b>123.0 (CTAF) 0</b>
----------------------------	---	---------------------------------



IAF  
LAFAYETTE  
109.8 LFT  
Chan 35



CATEGORY	A	B	C	D
S-36	720-1 646 (700-1)	720-1¼ 646 (700-1¼)	720-1⅞ 646 (700-1⅞)	720-2 646 (700-2)
CIRCLING	780-1 705 (800-1)	780-1¼ 705 (800-1¼)	780-2 705 (800-2)	920-2¾ 845 (900-2¾)

SC-4, 16 APR 2026 to 14 MAY 2026

SC-4, 16 APR 2026 to 14 MAY 2026