

WAAS CH 86326 W30A	APP CRS 309°	Rwy Ldg TDZE Apt Elev	4752 800 800
--	------------------------	-----------------------------	---

RNAV (GPS) RWY 30

HASTINGS (9D9)

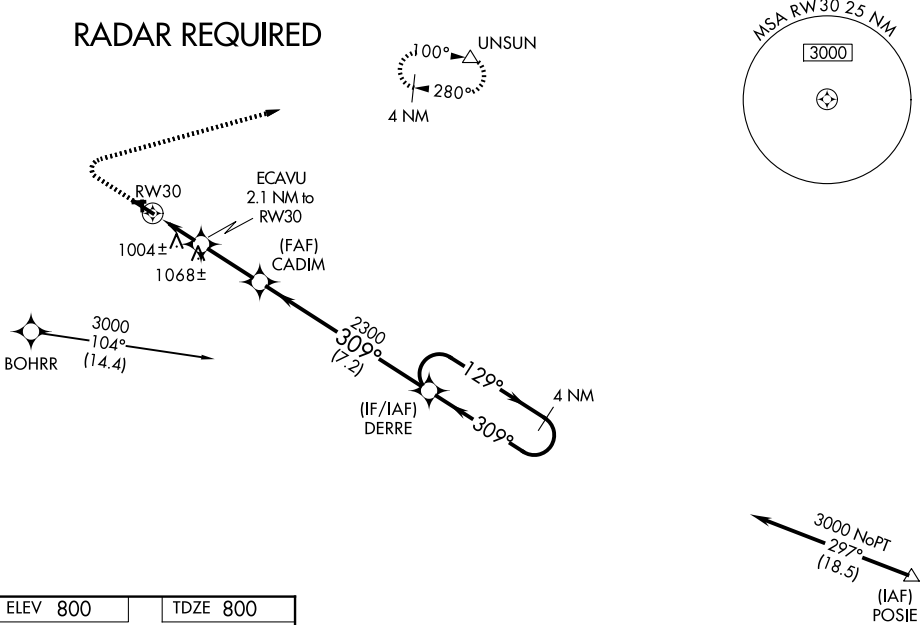
RNP APCH - GPS.

NA Circling NA to Rwy 9, 18, 27 and 36. Baro-VNAV NA. Use GRR altimeter setting; when not received, use Y70 altimeter setting: increase LPV DA to 1131 feet; increase LNAV/VNAV DA to 1377; increase all MDAs 20 feet. Rwy 30 helicopter visibility reduction below $\frac{3}{4}$ SM NA.

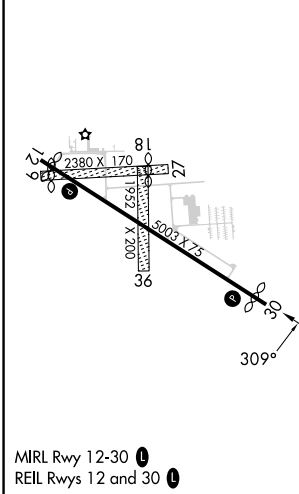
MISSED APPROACH:
Climb to 1400 then climbing right turn to 3000 direct UNSUN and hold.

GRR ASOS 118.725	GREAT LAKES APP CON ★ 128.4 257.6	UNICOM 123.075 (CTAF)
----------------------------	---	---------------------------------

RADAR REQUIRED



ELEV 800	TDZE 800
----------	----------



	1400	3000	UNSUN		4 NM Holding Pattern
	↑	↷	△		
	ECAVU 2.1 NM to RWY 30		CADIM 2300	DERRE	
	RWY 30		1500	2300	
	2.1 NM	2.5 NM	7.2 NM		
CATEGORY	A	B	C	D	
LPV DA	1116-1 316 (400-1)			NA	
LNAV/VNAV DA	1362-1 $\frac{5}{8}$ 562 (600-1 $\frac{5}{8}$)			NA	
LNAV MDA	1300-1	500 (500-1)	1300-1 $\frac{3}{8}$ 500 (500-1 $\frac{3}{8}$)	NA	
CIRCLING	1380-1 580 (600-1)	1440-1 640 (700-1)	1440-1 $\frac{3}{4}$ 640 (700-1 $\frac{3}{4}$)	NA	

EC-1, 16 APR 2026 to 14 MAY 2026

EC-1, 16 APR 2026 to 14 MAY 2026